

Monthly Report on Short-term Transactions of Electricity in India

October, 2020



Economics Division
Central Electricity Regulatory Commission
36, Janpath, Chanderlok Building



Contents

S.No.	Contents	Page No
	Contents	i
	List of Tables and Figures	ii
	Abbreviations	iii
1	Introduction	1
2	Volume of Short-term Transactions of Electricity	1
3	Price of Short-term Transactions of Electricity	3
3.1	<i>Price of electricity transacted through Traders</i>	3
3.2	<i>Price of electricity transacted through Power Exchanges</i>	3
3.3	<i>Price of electricity transacted through DSM</i>	3
4	Trading Margin	3
5	Volume of Short-term Transactions of Electricity (Regional Entity-wise)	4
6	Congestion on Inter-State Transmission Corridor for Day-Ahead Market and Real Time Market on Power Exchanges	5
7	Volume and Price of Renewable Energy Certificates (RECs)	5
8	Inferences	6

List of Tables and Figures

S. No.	List of Tables and Figures	Page No.
I List of Tables		
Table-1	Volume of Short-term Transactions of Electricity in India	8
Table-2	Percentage Share of Electricity Transacted by Trading Licensees	10
Table-3	Price of Electricity Transacted through Traders	11
Table-4	Price of Electricity Transacted through Traders (Time-wise)	11
Table-5	Price of Electricity Transacted in Day Ahead Market through Power Exchanges	11
Table-6	Price of Electricity Transacted in Real Time Market through Power Exchanges	11
Table-7	Volume and Price of Electricity in Term Ahead Market of IEX	12
Table-8	Volume and Price of Electricity in Term Ahead Market of PXIL	12
Table-9	Volume and Price of Electricity in Green Term Ahead Market of IEX	12
Table-10	Price of Electricity Transacted through DSM	12
Table-11	Volume of Electricity Sold through Bilateral	14
Table-12	Volume of Electricity Purchased through Bilateral	15
Table-13	Volume of Electricity Sold in Day Ahead Market through Power Exchanges	16
Table-14	Volume of Electricity Purchased in Day Ahead Market through Power Exchanges	18
Table-15	Volume of Electricity Sold in Real Time Market through Power Exchanges	19
Table-16	Volume of Electricity Purchased in Real Time Market through Power Exchanges	21
Table-17	Volume of Electricity Under drawal through DSM	22
Table-18	Volume of Electricity Over drawal through DSM	25
Table-19	Total Volume of Net Short-term Transactions of Electricity (Regional Entity-wise)	28
Table-20	Details of Congestion in Power Exchanges	31
Table-21	Volume of Short-term Transactions of Electricity in India (Day-wise)	32
Table-22	Price of Electricity in Day Ahead Market and DSM (Day-wise)	33
Table-23	Price of Electricity in Real Time Market (Day-wise)	34
Table-24	Volume of Short-term Transactions of Electricity (Regional Entity-wise)	35
II List of Figures		
Figure-1	Volume of Various Kinds of Electricity Transactions in Total Electricity Generation	8
Figure-2	Volume of Short-term Transactions of Electricity	8
Figure-3	Volume transacted in different markets segments on Power Exchanges	9
Figure-4	Volume of Short-term Transactions of Electricity (Day-wise)	9
Figure-5	Percentage Share of Electricity Transacted by Trading Licensees	10
Figure-6	Price of Short-term Transactions Electricity	13
Figure-7	Price of Short-term Transactions Electricity (Day-wise)	13

Abbreviations

Abbreviation	Expanded Version
ABSP_ANTP	Acme Bhiwadi Solar Power Private Limited, Anantpur
ACBIL	ACB (India) Limited
ACP	Area Clearing Price
ACV	Area Clearing Volume
ACME_SLR	ACME Solar Power Project
ACME_RUMS	Acme Rewa Ultra Mega Solar Project
ADANI GREEN	Adani Green Energy Limited
ADY1_PVGD	Adyah Solar Energy Pvt Ltd., Block 1 Pavagada Solar Park
ADY2_PVGD	Adyah Solar Energy Pvt Ltd., Block 2 Pavagada Solar Park
ADY3_PVGD	Adyah Solar Energy Pvt Ltd., Block 3 Pavagada Solar Park
ADY6_PVGD	Adyah Solar Energy Pvt Ltd., Block 6 Pavagada Solar Park
ADY10_PVGD	Adyah Solar Energy Pvt Ltd., Block 10 Pavagada Solar Park
ADY13_PVGD	Adyah Solar Energy Pvt Ltd., Block 13 Pavagada Solar Park
AGEMPL BHUJ	Adani Green Energy (MP) Ltd., Bhuj
AHSP_ANTP	Acme Hisar Solar Power Private Limited, Anantpur
AKS_PVGD	ACME Kurukshetra Solar Energy Pvt. Ltd
AKSP_ANTP	Acme Karnal Solar Power Private Limited, Anantpur
ALFANAR_BHUJ	Alfanar Group Wind Project, Bhuj, Gujarat
AMPS Hazira	Arcelor Mittal Nippon Steel, Hazira
APTEL	Appellate Tribunal for Electricity
ARERJL_SLR	Adani Renewable Energy Park Rajasthan Ltd.
ARINSUM_RUMS	Solenergi Rewa Ultra Mega Solar Project
ARS_PVGD	ACME REWARI Solar Power Pvt Ltd.
AVAADA1_PVGD	Avaada Solar Energy Private Ltd., Pavagada Project 1
AVAADA2_PVGD	Avaada Solar Energy Private Ltd., Pavagada Project 2
AZURE_ANTP	Azure Power, Anantpur
AZURE_PVGD	Azure Power, Pavagada
AZURE_SLR	Azure Power Solar Power Project
AZURE34_SLR	Azure Power 34 Pvt. Ltd. Solar Power Project
BALCO	Bharat Aluminum Company Limited
BARC	Bhabha Atomic Research Centre
BBMB	Bhakra Beas Management Board
BETAM_TCN	Betam Wind Energy Private Limited, Tuticorin
BHADRAVATHI HVDC	Bhadravathi High Voltage Direct Current Link
BRBCL	Bhartiya Rail Bijlee Company Limited
CEA	Central Electricity Authority
CERC	Central Electricity Regulatory Commission
CGPL	Coastal Gujarat Power Limited
CHUKHA HEP	Chhukha Hydroelectric Project, Bhutan
CHUZACHEN HEP	Chuzachen Hydro Electric Power Project
CLEAN_SLR	Clean Solar Power Pvt. Ltd
COASTGEN	Coastal Energen Private Limited
DAGACHU	Dagachhu Hydro Power Corporation
DAM	Day Ahead Market
DB POWER	Diligent Power Pvt. Ltd.
DCPP	Donga Mahua Captive Power Plant
DGEN MEGA POWER	DGEN Mega Power Project
DHARIWAL POWER	Dhariwal Power Station

DIKCHU HEP	Dikchu Hydro-electric Project, Sikkim
DOYANG HEP	Doyang Hydro Electric Project
DSM	Deviation Settlement Mechanism
DVC	Damodar Valley Corporation
EMCO	EMCO Energy Limited
ESSAR POWER	Essar Power Limited
ESSAR STEEL	Essar Steel Ltd
FORTUM1_PVGD	Fortum Finnsurya Energy Private Ltd, Pavagada Project 1
FORTUM2_PVGD	Fortum Finnsurya Energy Private Ltd, Pavagada Project 2
FRV_ANTP	Fotowatio Renewable Ventures, Anantapur
FRV_NPK	Fotowatio Renewable Ventures,N P Kunta
GIWEL_BHUI	Green infra wind energy Limited, Bhuj
GIWEL_TCN	Green Infra Wind Energy Limited,Tuticorin
GMR CHHATTISGARH	GMR Chhattisgarh Energy Limited
GMR KAMALANGA	GMR Kamalanga Energy Ltd.
G-TAM	Green Term Ahead Market
HVDC ALPD	Alipurduar High Voltage Direct Current Link
HVDC CHAMPA	Champa-Kurukshetra High Voltage Direct Current Link
HVDC PUS	Pasauli High Voltage Direct Current Link
HVDC RAIGARH	Raigarh-Pugalur High Voltage Direct Current Link
IEX	Indian Energy Exchange Limited
IGSTPS	Indira Gandhi Super Thermal Power Station Jhajjar
IL&FS	Infrastructure Leasing & Financial Services Limited
INOX_BHUI	INOX Wind Limited, Bhuj, Gujarat
J&K	Jammu & Kashmir
JAYPEE NIGRIE	Jaypee Nigrie Super Thermal Power Project
JHABUA POWER MP	Jhabua Thermal Power Project
JINDAL POWER	Jindal Power Limited
JINDAL STAGE-II	Jindal Power Ltd Stage II
JITPL	Jindal India Thermal Power Ltd.
JORETHANG	Jorethang Loop Hydroelectric Power Project
KAPP 3&4	Kakrapar Atomic Power Station Unit 3 & 4
KARCHAM WANGTOO	Karcham Wangtoo H.E. Project
KORBA WEST POWER	Korba West Power Company Limited
KOTESHWAR	Koteshwar Hydro Power project
KREDL_PVGD	Karnataka Renewable Energy Development Ltd, Pavagada
KSK MAHANADI	KSK Mahanadi Power Ltd
KSMPL_SLR	Kilaj Solar (Maharashtra) Private Limited
KURICHU HEP	Kurichhu Hydro-electric Power Station, Bhutan
LANKO_AMK	Lanco Amarkantak Power Private Limited
LANKO BUDHIL	Lanco Budhil Hydro Power Private Limited
LANKO KONDAPALLY	Lanco Kondapally Power Private Limited
LOKTAK	Loktak Power Project
MAHINDRA_RUMS	Mahindra Rewa Ultra Mega Solar Project
MAHOBASL	Mahoba Solar Power Project
MALANA	Malana Hydroelectric Plant
MANGDECHU HEP	Mangdechhu Hydroelectric Project, Mangdechhu River, Bhutan
Maruti Coal	Maruti Clean Coal and Power Limited
MB POWER	MB Power Ltd
MEENAKSHI	Meenakshi Energy Private Limited

MP	Madhya Pradesh
MTPS II	Muzaffarpur Thermal Power Station – Stage II
MYTRAH_TCN	Mytrah Energy (India) Private Limited, Tuticorin
Mus	Million Units
NAPP	Narora Atomic Power Plant
NEEPCO	North Eastern Electric Power Corporation Limited
NEP	Nepal
NFL	National Fertilisers Limited
NHPC STATIONS	National Hydro Electric Power Corporation Ltd. Stations
NJPC	Nathpa Jhakri Hydroelectric Power Station
NLC	Neyveli Lignite Corporation Limited
NLDC	National Load Dispatch Centre
NPGC	Nabinagar Power Generating Company (Pvt.) Limited
NSPCL	NTPC - SAIL Power Company Private Limited
NTECL Vallur	NTPC Tamil Nadu Energy Company Limited Vallur
NTPC_ANTP	NTPC Anantapur
NTPC STATIONS	National Thermal Power Corporation Ltd. Stations
NTPL	NLC Tamil Nadu Power Limited
NVVN	NTPC Vidyut Vyapar Nigam Limited
ONGC Platana	ONGC Tripura Power Company
OPGC	Odisha Power Generation Corporation
ORANGE_TCN	Orange Renewable Power Pvt. Ltd, Tuticorin
OSTRO	Ostro Energy Private Limited
OTC	Over The Counter
PARAM_PVGD	Parampujya Solar Energy Private Ltd
PARE HEP	Pare hydroelectric project, Arunachal Pradesh
PX	Power Exchange
PXIL	Power Exchange India Limited
RAIL	Indian Railways
RAMPUR HEP	Rampur Hydro Electric Power Project
RANGIT HEP	Rangit Hydroelectric power project
RANGANADI HEP	Ranganadi Hydro Electric Power Project, Arunachal Pradesh
RAP-B	Rajasthan Atomic Power Plant-B
RAP-C	Rajasthan Atomic Power Plant-C
REC	Renewable Energy Certificate
REGL	Raigarh Energy Generation Limited
RENEW_BHACHAU	ReNew Power Limited, Bhachau
RENEW_BHUJ	ReNew Power Limited, Bhuj
RENEW_PVGD	ReNew Wind Energy (TN2) Private Limited
RENEW_SLR	Renew Solar
RENEW_SLR_BKN	Renew Solar Bikaner
RGPPL_IR	Ratnagiri Gas and Power Private Ltd., supply to Indian Railways
RGPPL_OTHER	Ratnagiri Gas and Power Private Limited
RLDC	Regional Load Dispatch Centre
RPREL	Raipur Energen Limited
RTC	Round The Clock
RTM	Real Time Market
Sasan UMPP	Sasan Ultra Mega Power Project
SB_SLR	Soft Bank Solar
SBG CLEANTECH_SLR	SBG Cleantech Ltd

SBG_NPK	SB Energy Solar Private Limited, NP Kunta
SBG_PVGD	SB Energy Solar Private Limited, Pavagada
SEMBCORP	Sembcorp Gayatri Power Ltd
SHREE CEMENT	Shree Cement Limited
SIMHAPURI	Simhapuri Energy Private Limited
SKS Power	SKS Power Generation Chhattisgarh Limited
SPECTRUM	Spectrum Power Generation Ltd
TALA HEP	Tala Hydroelectric Project, Bhutan
TASHIDENG HEP	Tashiding Hydro Electric Project, Sikkim
TATA_ANTP	TATA Power Anantapur
TATA_PVGD	Tata Power Renewable Energy Ltd
TATA_SLR	Tata Solar
TEESTA STG3	Teesta Stage 3 Hydro Power Project
TEHRI	Tehri Hydro Electric Power Project
TAM	Term Ahead Market
THERMAL POWERTECH	Thermal Powertech Corporation India Limited
URI-II	Uri-II Hydropower Project
VINDHYACHAL HVDC	Vindhyachal High Voltage Direct Current Link
YARROW_PVGD	Yarrow Infra Structure Private Ltd

1. Introduction

1.1. A well-functioning electricity market requires an effective market monitoring process. As part of the market monitoring process, the monthly report on short-term transactions of electricity, is being prepared and posted on the website of CERC since August 2008. Here, “short-term transactions of electricity” refers to the contracts of less than one year period, for electricity transacted (inter-State) through inter-State Trading Licensees and directly by the Distribution Licensees, Power Exchanges (Indian Energy Exchange Ltd (IEX) and Power Exchange India Ltd (PXIL), and Deviation Settlement Mechanism (DSM). The objectives of the report are: (i) to observe the trends in volume and price of the short-term transactions of electricity; (ii) to analyse competition among the market players; (iii) to analyse effect of congestion on volume of electricity transacted through power exchanges; (iv) to provide information on volume and price of Renewable Energy Certificates (RECs) transacted through power exchanges; and (v) to disclose/disseminate all relevant market information. The details of the report for the month of **October, 2020** are as under:

2. Volume of Short-term Transactions of Electricity

2.1. During October 2020, total electricity generation excluding generation from renewable and captive power plants in India was 107704.50 MUs (Table-1). Of the total electricity generation, 10.45% was transacted through short-term, comprising of 5.91% through Day Ahead Market (DAM) and Real Time Market (RTM) of power exchanges, followed by 2.76% through bilateral (through traders and term-ahead contracts on power exchanges and directly between distribution companies) and 1.78% through DSM (Table-1 & Figure-1).

2.2. Of the total short-term transactions (11250.18 MUs), the electricity transacted in DAM and RTM of power exchanges constitutes 56.57%, followed by 26.41% through bilateral (19.38% through traders and term-ahead contracts on power exchanges and 7.02% directly between distribution companies) and 17.02% through DSM (Table-1 & Figure-2). Daily volume of short-term transactions is shown in Table-21 & Figure-4.

2.3. Of the total volume of electricity transacted through power exchanges, 73.14% of the volume was transacted in DAM, followed by 16.13% in Term Ahead Market (TAM) and 10.73% in RTM (Figure-3).

2.4. The percentage share of electricity traded by each trading licensee in the total volume of electricity traded by all the trading licensees is provided in Table-2 & Figure-5. The volume of electricity transacted by the trading licensees includes bilateral transactions and the transactions undertaken through power exchanges. There were 34 trading licensees as on October 2020. In October 2020, 23 trading licensees were engaged in short term trading. Top 5 trading licensees had a share of 81.86% in the total volume traded by all the licensees. These are PTC India Ltd., Adani Enterprises Ltd., Manikaran Power Ltd., GMR Energy Trading Ltd. and Kreate Energy (I) Pvt. Ltd.

2.5. Herfindahl-Hirschman Index (HHI) has been used for measuring the competition among the trading licensees. Increase in the HHI generally indicates decrease in competition and increase of market concentration, and vice versa. The HHI below 0.15 indicates non-concentration, HHI between 0.15 and 0.25 indicates moderate concentration and HHI above 0.25 indicates high concentration. The HHI has been computed based on the volume of electricity traded (inter-State & intra-State) by inter-State trading licensees, and it was 0.2379 for the month of October 2020, which indicates moderate concentration of market power (Table-2).

2.6. The volume of electricity transacted in the DAM of IEX and PXIL was 5500.53 MUs and 49.57 MUs respectively. The volume of total buy bids and sell bids was 6163.48 MUs and 9803.87 MUs respectively in IEX, while the same was 60.73 MUs and 192.34 MUs respectively in PXIL.

2.7. The volume of electricity transacted in the RTM of IEX was 814.48 MUs. No electricity was transacted in the RTM of PXIL. The volume of total buy bids and sell bids was 1078.06 MUs and 2199.48 MUs respectively in IEX, while there were no bids in PXIL. The variation in the volume of buy bids and sell bids placed through power exchanges shows variation in the demand and supply position.

2.8. The volume of electricity transacted in the TAM of IEX and PXIL was 219.17 MUs and 791.06 MUs respectively (Table-7 & Table-8). The volume of electricity transacted in the Green Term Ahead Market (G-TAM) of IEX was 213.44 MUs (Table-9).

3. Price of Short-term Transactions of Electricity

3.1. **Price of electricity transacted through Traders:** The minimum, maximum and weighted average sale prices have been computed for the electricity transacted through traders and the sale prices were ₹2.82/kWh, ₹5.12/kWh and ₹3.86/kWh respectively (Table-3). The weighted average sale prices were also computed for the electricity transacted during Round the Clock (RTC), Peak and Off-peak periods separately, and the sale prices were ₹3.12/kWh, ₹4.89/kWh and ₹4.26/kWh respectively (Table-4).

3.2. **Price of electricity transacted through Power Exchanges:** The minimum, maximum and weighted average prices for the electricity transacted in the DAM of IEX were ₹1.60/kWh, ₹6.00/kWh and ₹2.83/kWh respectively. These prices in the DAM of PXIL were ₹2.00/kWh, ₹5.47/kWh and ₹2.84/kWh respectively (Table-5). The minimum, maximum and weighted average prices for the electricity transacted in the RTM of IEX were ₹0.60/kWh, ₹11.56/kWh and ₹2.78/kWh respectively (Table-6). The price of electricity transacted in the TAM of IEX and PXIL was ₹2.58/kWh and ₹2.61/kWh respectively (Table-7 and Table-8). The price of electricity transacted in the G-TAM of IEX was ₹3.43/kWh (Table-9).

3.3. **Price of electricity transacted through DSM:** The minimum, maximum and average price of DSM was ₹0.00/kWh and ₹8.00/kWh ₹2.65/kWh respectively (Table-10).

3.4. The prices of electricity transacted through trading licensees, power exchanges and DSM and their comparison is shown in Table-22 & 23, Figure-6 & 7.

4. Trading Margin

4.1. As per the CERC (Procedure, Terms and Conditions for grant of trading licence and other related matters) Regulations 2020, the trading licensees are allowed to charge trading margin of not less than 0 paise/kWh and up to 7 paise/kWh. The weighted average trading margin charged by the trading licensees for bilateral transactions during the month was ₹0.019/kWh.

5. Volume of Short-term Transactions of Electricity (Regional Entity¹-Wise)

5.1. Of the total bilateral transactions, top 5 regional entities sold 49.25% of the volume, and these were Raipur Energen Limited, Gujarat, Sembcorp Gayatri Power Ltd., Damodar Valley Corporation and Telangana. Top 5 regional entities purchased 63.79% of the volume, and these were Tamil Nadu, Madhya Pradesh, Haryana, Punjab and West Bengal (Table-11 & 12).

5.2. Of the total DAM transactions of power exchanges, top 5 regional entities sold 37.26% of the volume, and these were Teesta Stage 3 Hydro Power Project, Gujarat, Odisha Sembcorp Gayatri Power Ltd and Jaypee Nigrie Super Thermal Power Project. Top 5 regional entities purchased 54.23% of the volume, and these were Gujarat, Andhra Pradesh, Punjab, Tamil Nadu and Rajasthan (Table-13 & 14).

5.3. Of the total RTM transactions of power exchanges, top 5 regional entities sold 45.16% of the volume, and these were Neyveli Lignite Corporation Limited, Odisha, Telangana, North Eastern Electric Power Corporation Limited Stations and Karnataka. Top 5 regional entities purchased 58.98% of the volume, and these were Andhra Pradesh, Jammu & Kashmir, West Bengal, Punjab and Rajasthan (Table-15 & 16).

5.4. Of the total DSM transactions, top 5 regional entities under drew 22.09% of the volume, and these were NHPC Stations, Tamil Nadu, NTPC Stations (Western Region), Maharashtra and Telangana (Table-17). Top 5 regional entities overdrew 23.95% of the volume, and these were Tala Hydroelectric Project-Bhutan, Rajasthan, NTPC Stations (Eastern Region), West Bengal and Uttar Pradesh (Table-18).

5.5. The total volume of net short-term transactions of electricity (Regional entity-wise) i.e. volume of net transactions through bilateral, power exchanges and DSM is shown in Table-19 & 24. Top 5 electricity selling regional entities were Sembcorp Gayatri Power Ltd., Raipur Energen Limited, Teesta Stage 3 Hydro Power Project, Raigarh Energy Generation Limited and Odisha. Top 5 electricity purchasing regional entities were Tamil Nadu, Punjab, Andhra Pradesh, Rajasthan and Haryana.

¹ In case of a state, the entities which are “selling” also include generators connected to state grid and the entities which are “buying” also include open access consumers.

6. Congestion² on Inter-State Transmission Corridor for Day-Ahead Market and Real Time Market on Power Exchanges

6.1. The power exchanges use a price discovery mechanism in which the aggregate demand and supply are matched to arrive at an unconstrained market price and volume. This step assumes that there is no congestion in the inter-State transmission system between different regions. However, in reality, the system operator (NLDC) in coordination with RLDCs limits the flow (due to congestion) in the inter-State transmission system. In such a situation, power exchanges adopt a mechanism called “Market Splitting”³.

6.2. In the month of October 2020, congestion occurred in the DAM and RTM of IEX. There was no congestion on PXIL. The details of congestion are shown in Table-20. The volume of electricity that could not be cleared due to congestion & other reasons and could not be transacted through power exchanges is the difference between unconstrained cleared volume and actual cleared volume.

6.3. During the month, the volume of electricity that could not be cleared in DAM on IEX was 0.04% of the unconstrained cleared volume, while the volume of electricity that could not be cleared in the RTM on IEX due to congestion was 0.01% of the unconstrained cleared volume. In terms of time, congestion occurred was 0.71% in the DAM and 0.13% in the RTM, both on IEX (Table-19).

7. Volume and Price of Renewable Energy Certificates (RECs)

7.1. The concept of Renewable Energy Certificates (RECs) seeks to address mismatch between availability of renewable energy and the requirement of the obligated entities to

² “Congestion” means a situation where the demand for transmission capacity exceeds the available transfer capability

³ “Market Splitting” is a mechanism adopted by Power Exchange where the market is split in the event of transmission congestion, into predetermined (by NLDC) bid areas or zones, which are cleared individually at their respective area prices such that the energy balance in every bid area is reached based upon the demand and supply in individual bid areas and using the available transmission corridor capacity between various bid areas simultaneously”
As a result of this market splitting the price of electricity in the importing region, where demand for electricity is more than supply, becomes relatively higher than the price of electricity in the exporting region.

meet their renewable purchase obligation by purchasing green attributes of renewable energy remotely located in the form of RECs. The REC mechanism is a market based instrument, to promote renewable sources of energy and development of electricity market.

7.2. One REC is equivalent to 1 MWh electricity injected into the grid from renewable energy sources. The REC is exchanged only in the power exchanges approved by CERC within the band of a floor price and forbearance (ceiling) price as notified by CERC from time to time. The first REC trading was held on power exchanges in May, 2011.

7.3. There were no transactions of REC in the month of October, 2020 as the scheduled trading was postponed by Hon'ble APTEL in matter of the CERC order fixing new floor and forbearance price for both Solar and Non-solar RECs.

8. Inferences:

- (1) The percentage of short-term transactions of electricity to total electricity generation was 10.45%.
- (2) Of the total short-term transactions, the electricity transacted in DAM and RTM of power exchanges constitutes 56.57%, followed by 26.41% through bilateral (19.38% through traders and term-ahead contracts on power exchanges and 7.02% directly between distribution companies) and 17.02% through DSM.
- (3) Of the total volume transacted through the power exchanges, 73.14% of the volume was transacted in DAM, followed by 16.13% in TAM and 10.73% in RTM.
- (4) Top 5 trading licensees had a share of 81.86% in the total volume traded by all the trading licensees.
- (5) The Herfindahl Hirschman Index computed for the volume of electricity traded by trading licensees was 0.2379, indicating moderate concentration of market power.
- (6) The weighted average price of electricity transacted through trading licensees was ₹3.86/kWh.

- (7) The weighted average price of electricity transacted in DAM of IEX and PXIL was ₹2.83/kWh and ₹2.84/kWh. The weighted average price of electricity transacted in RTM of IEX was ₹2.78/kWh. No electricity was transacted in the RTM of PXIL.
- (8) The average price of electricity transacted through DSM was ₹2.65/kWh.
- (9) The weighted average trading margin charged by the trading licensees for bilateral transactions was ₹0.019/kWh. The trading margin charged during the month was in line with the Trading Margin Regulations 2020.
- (10) Top 5 electricity selling regional entities were Sembcorp Gayatri Power Ltd., Raipur Energen Limited, Teesta Stage 3 Hydro Power Project, Raigarh Energy Generation Limited and Odisha. Top 5 electricity purchasing regional entities were Tamil Nadu, Punjab, Andhra Pradesh, Rajasthan and Haryana.
- (11) In the month of October 2020, congestion occurred in the DAM and RTM of IEX. The volume of electricity that could not be cleared in DAM on IEX was 0.04% of the unconstrained cleared volume, while the volume of electricity that could not be cleared in the RTM on IEX due to congestion was 0.01% of the unconstrained cleared volume. In terms of time, congestion occurred was 0.71% in the DAM and 0.13% in the RTM, both on IEX
- (12) There were no transactions of REC on both the power exchanges in the month of October 2020, as the scheduled REC trading sessions were postponed by the order of Hon'ble APTEL.

Table-1: VOLUME OF SHORT-TERM TRANSACTIONS OF ELECTRICITY IN INDIA, OCTOBER 2020				
Sr.No	Short-term transactions	Volume (MUs)	% to Volume of short-term transactions	% to Total Generation
1	Bilateral	2970.93	26.41	2.76
	(i) Through Traders and PXs	2180.64	19.38	2.02
	(ii) Direct	790.30	7.02	0.73
2	Through Power Exchanges	6364.57	56.57	5.91
	(i) IEX			
	(a) DAM	5500.53	48.89	5.11
	(b) RTM	814.48	7.24	0.76
	(ii) PXIL			
	(a) DAM	49.57	0.44	0.05
	(b) RTM	0.00	0.00	0.00
3	Through DSM	1914.68	17.02	1.78
	Total	11250.18	-	10.45
	Total Generation	107704.50	-	-

Source: NLDC

Figure-1: Volume of Various Kinds of Electricity Transactions in Total Electricity Generation, October 2020

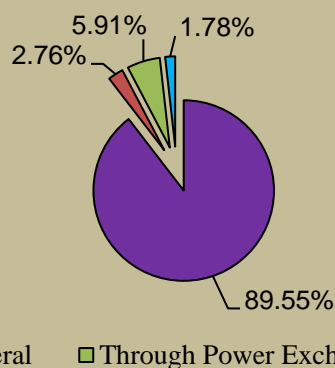


Figure-2: Volume of Short-term Transactions of Electricity, October 2020

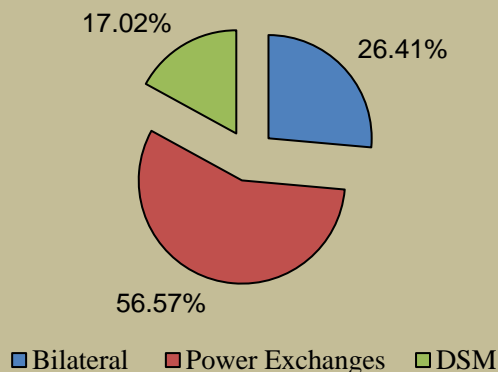


Figure-3: Volume transacted in different markets segments on Power Exchanges, October 2020

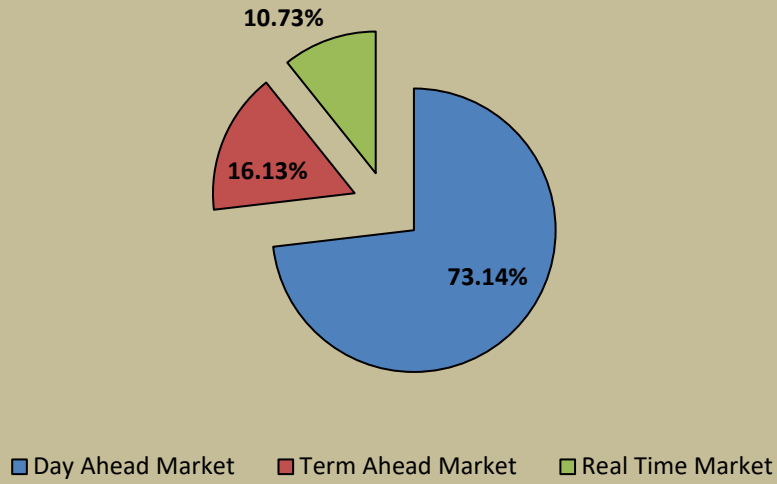


Figure-4: Volume of Short-term Transactions of Electricity, October 2020 (Day-wise)

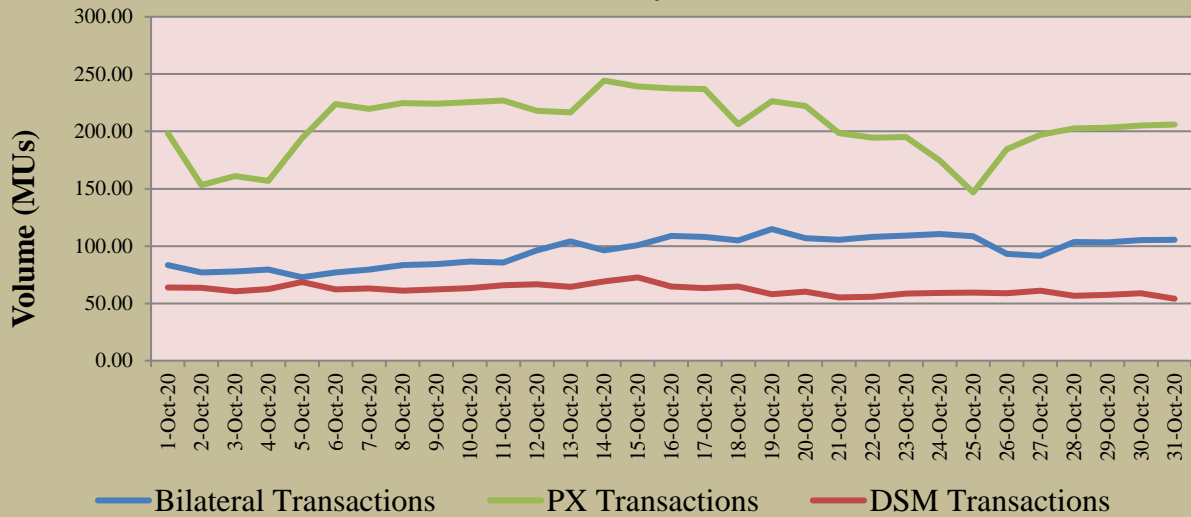


Table-2: PERCENTAGE SHARE OF ELECTRICITY TRANSACTED BY TRADING LICENSEES, OCTOBER 2020			
Sr.No	Name of the Trading Licensee	% Share in total Volume transacted by Trading Licensees	Herfindahl-Hirschman Index
1	PTC India Ltd.	41.00	0.1681
2	Adani Enterprises Ltd.	23.15	0.0536
3	Manikaran Power Ltd.	7.43	0.0055
4	GMR Energy Trading Ltd.	5.33	0.0028
5	Kreate Energy (I) Pvt. Ltd.	4.94	0.0024
6	NTPC Vidyut Vyapar Nigam Ltd.	4.48	0.0020
7	Tata Power Trading Company (P) Ltd.	4.35	0.0019
8	Arunachal Pradesh Power Corporation (P) ltd	3.27	0.0011
9	Essar Electric Power Development Corp. Ltd.	1.23	0.0002
10	National Energy Trading & Services Ltd.	1.07	0.0001
11	Instinct Infra & Power Ltd.	0.67	0.0000
12	RPG Power Trading Company Ltd.	0.62	0.0000
13	Knowledge Infrastructure Systems (P) Ltd	0.58	0.0000
14	Gita Power & Infrastructure Private Limited	0.52	0.0000
15	Statkraft Markets Pvt. Ltd.	0.40	0.0000
16	JSW Power Trading Company Ltd	0.34	0.0000
17	Jaiprakash Associates Ltd.	0.21	0.0000
18	Abja Power Private Limited	0.12	0.0000
19	Customized Energy Solutions India (P) Ltd.	0.10	0.0000
20	Shree Cement Ltd.	0.08	0.0000
21	NLC India Ltd.	0.07	0.0000
22	Phillip Commodities India (P) Ltd.	0.03	0.0000
23	IPCL Power Trading Pvt. Ltd.	0.0002	0.0000
TOTAL		100.00%	0.2379
Top 5 trading licensees		81.86%	
<i>Note 1: Volume of electricity transacted by the trading licensees includes bilateral transactions (inter-state & intra-state) and the transactions undertaken through power exchanges.</i>			
<i>Note 2: Volume of electricity transacted by Global Energy Ltd is not included.</i>			
<i>Source: Information submitted by trading licensees</i>			

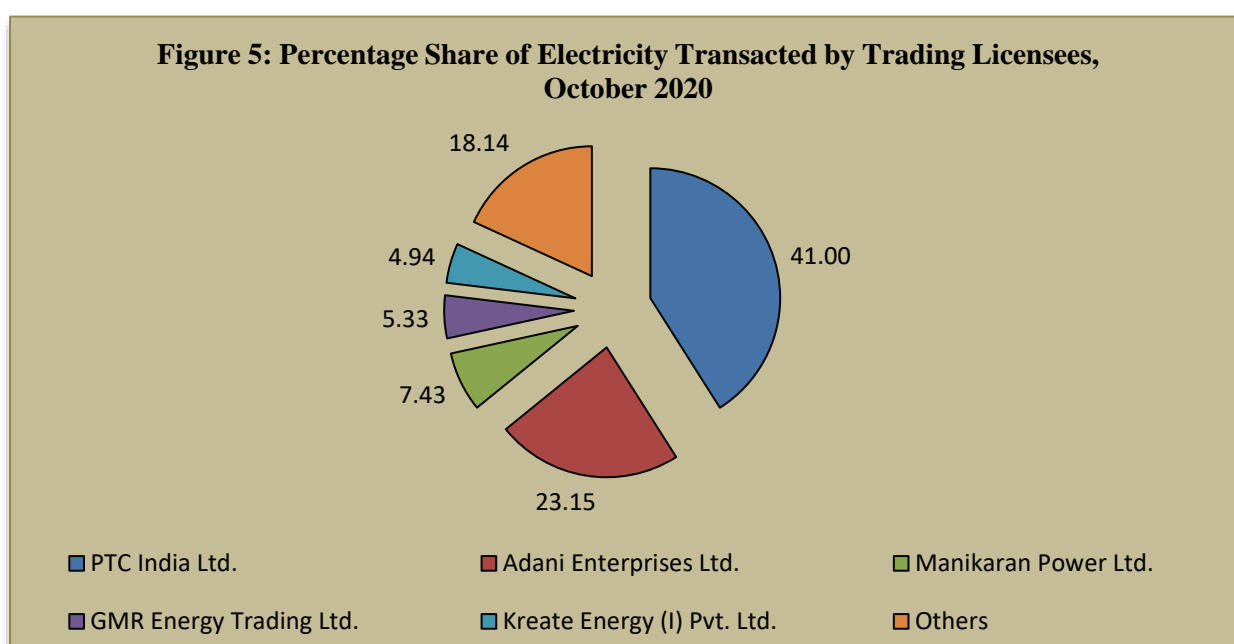


Table-3: PRICE OF ELECTRICITY TRANSACTED THROUGH TRADERS, OCTOBER 2020

Sr.No	Item	Sale Price of Traders (₹/kWh)
1	Minimum	2.82
2	Maximum	5.12
3	Weighted Average	3.86

Source: Information submitted by trading licensees

Table-4: PRICE OF ELECTRICITY TRANSACTED THROUGH TRADERS (TIME-WISE), OCTOBER 2020

Sr.No	Period of Trade	Sale Price of Traders (₹/kWh)
1	RTC	3.12
2	PEAK	4.89
3	OFF PEAK	4.26

Source: Information submitted by trading licensees

Table-5: PRICE OF ELECTRICITY TRANSACTED IN DAY AHEAD MARKET THROUGH POWER EXCHANGES, OCTOBER 2020

Sr.No	ACP	Price in IEX (₹/kWh)	Price in PXIL (₹/kWh)
1	Minimum	1.60	2.00
2	Maximum	6.00	5.47
3	Weighted Average	2.83	2.84

Source: Information submitted by IEX and PXIL

Table-6: PRICE OF ELECTRICITY TRANSACTED IN REAL TIME MARKET THROUGH POWER EXCHANGES, OCTOBER 2020

Sr.No	ACP	Price in IEX (₹/kWh)	Price in PXIL (₹/kWh)
1	Minimum	0.60	-
2	Maximum	11.56	-
3	Weighted Average	2.78	-

Source: Information submitted by IEX and PXIL

Table-7: VOLUME AND PRICE OF ELECTRICITY IN TERM AHEAD MARKET OF IEX, OCTOBER 2020			
Sr.No	Term ahead contracts	Actual Scheduled Volume (MUs)	Weighted Average Price (₹/kWh)
1	Intra-Day Contracts	0.89	3.47
2	Day Ahead Contingency Contracts	16.87	2.77
3	Daily Contracts	69.40	2.57
4	Weekly Contracts	132.00	2.55
	Total	219.17	2.58

Source: IEX

Table-8: VOLUME AND PRICE OF ELECTRICITY IN TERM AHEAD MARKET OF PXIL, OCTOBER 2020			
Sr.No	Term ahead contracts	Actual Scheduled Volume (MUs)	Weighted Average Price (₹/kWh)
1	Intra-Day Contracts	20.60	3.33
2	Any Day(s) Contracts	770.46	2.59
	Total	791.06	2.61

Source: PXIL

Table-9: VOLUME AND PRICE OF ELECTRICITY IN GREEN TERM AHEAD MARKET OF IEX, OCTOBER 2020			
Sr.No	Green Term ahead contracts	Actual Scheduled Volume (MUs)	Weighted Average Price (₹/kWh)
1	Intra-Day Contracts	5.085	3.61
2	Day Ahead Contingency Contracts	208.35	3.42
	Total	213.44	3.43

Source: IEX

Table-10: PRICE OF ELECTRICITY TRANSACTED THROUGH DSM, OCTOBER 2020		
Sr.No	Item	Price in All India Grid (₹/kWh)
1	Minimum	0.00
2	Maximum	8.00
3	Average	2.65

Source: NLDC

Figure-6: Price of Short-term Transactions of Electricity, October 2020

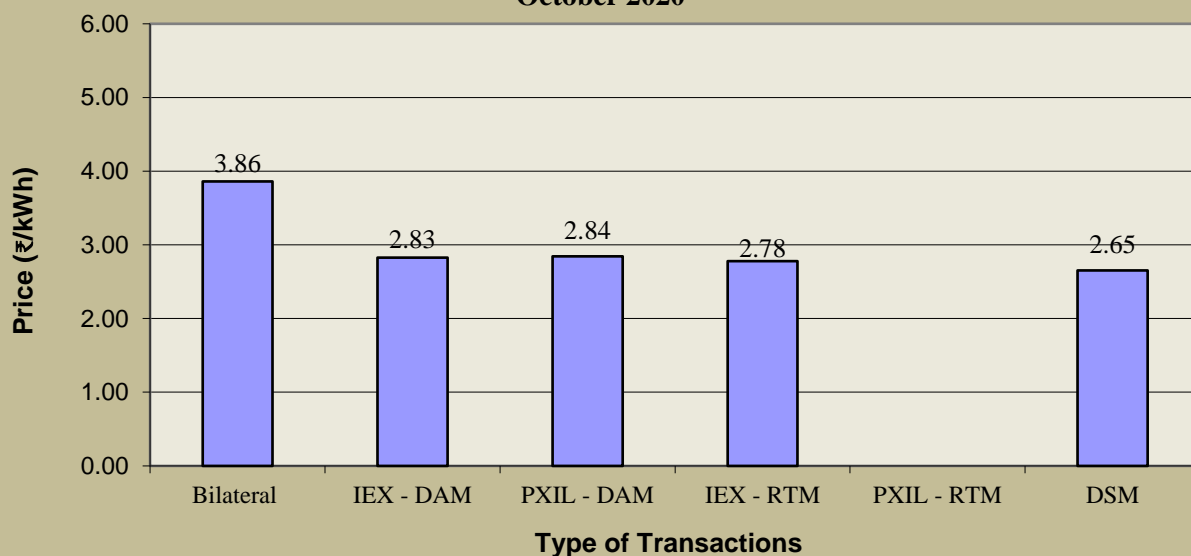
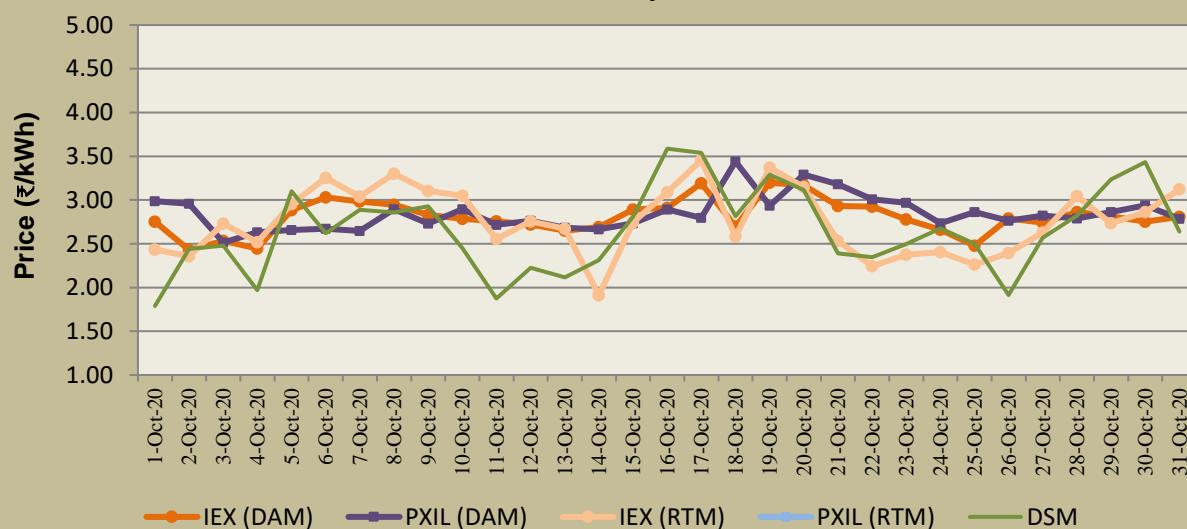


Figure-7: Price of Short-term Transactions of Electricity, October 2020 (Day-wise)



Note: In PXIL, no electricity was transacted in RTM.

Table-11: VOLUME OF ELECTRICITY SOLD THROUGH BILATERAL, OCTOBER 2020		
Name of the Entity	Volume of Sale (MUs)	% of Volume
RPREL	371.10	12.50
GUJARAT	369.32	12.44
SEBPCORP	312.22	10.51
DVC	217.04	7.31
TELANGANA	192.66	6.49
KARNATAKA	152.55	5.14
REGL	133.83	4.51
DELHI	131.16	4.42
ADHUNIK POWER LTD	129.02	4.34
DB POWER	126.72	4.27
ESSAR POWER	87.55	2.95
CHHATTISGARH	75.81	2.55
DAGACHU	73.30	2.47
PUNJAB	65.76	2.21
J & K	57.12	1.92
ONGC PALATANA	56.93	1.92
JITPL	56.48	1.90
HIMACHAL PRADESH	46.06	1.55
BALCO	42.50	1.43
MEGHALAYA	36.92	1.24
JORETHANG	33.74	1.14
SKS POWER	33.41	1.13
JAYPEE NIGRIE	29.58	1.00
TRN ENERGY	22.67	0.76
ODISHA	17.25	0.58
UTTAR PRADESH	17.25	0.58
ANDHRA PRADESH	17.22	0.58
TASHIDENG HEP	17.05	0.57
RAJASTHAN	10.52	0.35
LANKO_AMK	7.77	0.26
AD HYDRO	7.58	0.26
CHUZACHEN HEP	5.93	0.20
MAHARASHTRA	5.81	0.20
SIKKIM	5.55	0.19
MB POWER	2.13	0.07
ACBIL	0.76	0.03
WEST BENGAL	0.73	0.02
BIHAR	0.17	0.01
NTPC STATIONS-NER	0.13	0.004
KERALA	0.05	0.002
NTPC STATIONS-ER	0.03	0.001
MP	0.03	0.001
Total	2969.36	100.00
Volume Sold by top 5 Regional Entities	1462.32	49.25

Table-12: VOLUME OF ELECTRICITY PURCHASED THROUGH BILATERAL, OCTOBER 2020

Name of the Entity	Volume of Purchase (MUs)	% of Volume
TAMIL NADU	826.29	27.81
MP	294.26	9.90
HARYANA	292.67	9.85
PUNJAB	288.68	9.72
WEST BENGAL	193.29	6.51
BANGLADESH	146.27	4.92
JHARKHAND	129.02	4.34
RAJASTHAN	119.51	4.02
DELHI	111.70	3.76
CHHATTISGARH	96.09	3.23
BIHAR	92.20	3.10
HIMACHAL PRADESH	69.57	2.34
ASSAM	61.23	2.06
UTTAR PRADESH	57.76	1.94
ODISHA	56.00	1.89
MAHARASHTRA	38.13	1.28
TELANGANA	21.14	0.71
NEPAL(NVVN)	18.90	0.64
ANDHRA PRADESH	15.62	0.53
GOA	13.92	0.47
DVC	8.85	0.30
AMPS Hazira	5.95	0.20
GUJARAT	5.75	0.19
DADRA & NAGAR HAVELI	3.34	0.11
DAMAN AND DIU	3.20	0.11
KARNATAKA	1.58	0.05
TOTAL	2970.93	100.00
Volume Purchased by top 5 Regional Entities	1895.20	63.79

Table-13: VOLUME OF ELECTRICITY SOLD IN DAY AHEAD MARKET THROUGH POWER EXCHANGES, OCTOBER 2020

Name of the Entity	Volume of Sale (MUs)	% of Volume
TEESTA STG3	497.70	8.97
GUJARAT	444.14	8.00
ODISHA	390.63	7.04
SEMBCORP	387.90	6.99
JAYPEE NIGRIE	347.78	6.27
REGL	303.18	5.46
JINDAL POWER	297.27	5.36
UTTAR PRADESH	198.37	3.57
MP	196.97	3.55
JINDAL STAGE-II	188.31	3.39
COASTGEN	183.31	3.30
HIMACHAL PRADESH	169.69	3.06
RPREL	158.54	2.86
DB POWER	152.03	2.74
EMCO	132.31	2.38
THERMAL POWERTECH	127.37	2.29
CHHATTISGARH	110.18	1.99
ESSAR POWER	106.84	1.92
KARNATAKA	94.67	1.71
GMR KAMALANGA	60.26	1.09
NEEPCO STATIONS	57.05	1.03
MB POWER	56.11	1.01
KERALA	53.41	0.96
MARUTI COAL	48.28	0.87
ASSAM	46.56	0.84
SIKKIM	46.48	0.84
MEGHALAYA	43.27	0.78
DIKCHU HEP	41.88	0.75
WEST BENGAL	39.25	0.71
CHUZACHEN HEP	37.98	0.68
BIHAR	32.48	0.59
DELHI	32.41	0.58
KARCHAM WANGTOO	30.53	0.55
SAINJ HEP	25.99	0.47
ARUNACHAL PRADESH	25.44	0.46
JHARKHAND	25.41	0.46
TELANGANA	23.27	0.42
JITPL	21.93	0.40
CHANDIGARH	21.53	0.39
JORETHANG	20.43	0.37
SPECTRUM	20.08	0.36
GOA	18.85	0.34
NTPC STATIONS-WR	17.51	0.32
MAHARASHTRA	16.34	0.29
JHABUA POWER_MP	16.21	0.29
NTPC STATIONS-SR	15.94	0.29
ACBIL	14.33	0.26
AD HYDRO	13.87	0.25
TASHIDENG HEP	13.58	0.24
MANIPUR	12.71	0.23
ANDHRA PRADESH	12.38	0.22
DVC	12.37	0.22
ADANI GREEN	10.31	0.19
SKS POWER	10.23	0.18

NLC	9.35	0.17
RAJASTHAN	7.97	0.14
HARYANA	6.79	0.12
MIZORAM	6.50	0.12
BALCO	5.24	0.09
NTPC STATIONS-ER	5.11	0.09
NAGALAND	4.29	0.08
IL&FS	3.63	0.07
NTPL	3.55	0.06
TRIPURA	2.96	0.05
NTPC STATIONS-NER	2.92	0.05
ADHUNIK POWER LTD	2.28	0.04
LANCO BUDHIL	1.94	0.03
ONGC PALATANA	1.72	0.03
J & K	1.61	0.03
TAMIL NADU	1.24	0.02
DHARIWAL POWER	0.50	0.01
BRBCL,NABINAGAR	0.40	0.01
NJPC	0.18	0.003
RAMPUR HEP	0.09	0.002
Total	5550.10	100.00
Volume sold by top 5 Regional Entities	2068.14	37.26

Table-14: VOLUME OF ELECTRICITY PURCHASED IN DAY AHEAD MARKET THROUGH POWER EXCHANGES, OCTOBER 2020

Name of the Entity	Volume of Purchase (MUs)	% of Volume
GUJARAT	905.37	16.31
ANDHRA PRADESH	715.04	12.88
PUNJAB	624.88	11.26
TAMIL NADU	394.85	7.11
RAJASTHAN	369.59	6.66
UTTAR PRADESH	315.08	5.68
UTTARAKHAND	283.35	5.11
MAHARASHTRA	267.96	4.83
HARYANA	220.84	3.98
BIHAR	219.16	3.95
DELHI	209.65	3.78
TELANGANA	170.92	3.08
WEST BENGAL	124.41	2.24
ASSAM	122.63	2.21
DADRA & NAGAR HAVELI	116.58	2.10
J & K	98.66	1.78
HIMACHAL PRADESH	98.65	1.78
KARNATAKA	80.50	1.45
AMPS Hazira	41.45	0.75
ODISHA	41.28	0.74
KERALA	39.15	0.71
MP	30.67	0.55
DAMAN AND DIU	27.78	0.50
GOA	11.06	0.20
JHARKHAND	6.98	0.13
MEGHALAYA	5.81	0.10
CHHATTISGARH	4.98	0.09
CHANDIGARH	2.60	0.05
TRIPURA	0.19	0.003
NAGALAND	0.03	0.001
TOTAL	5550.10	100.00
Volume purchased by top 5 Regional Entities	3009.72	54.23

Table-15: VOLUME OF ELECTRICITY SOLD IN REAL TIME MARKET THROUGH POWER EXCHANGES, OCTOBER 2020		
Name of the Entity	Volume of Sale (MUs)	% of Volume
NLC	116.97	14.36
ODISHA	78.76	9.67
TELANGANA	60.50	7.43
NEEPCO STATIONS	56.52	6.94
KARNATAKA	55.09	6.76
UTTAR PRADESH	45.82	5.63
GUJARAT	43.64	5.36
NTPC STATIONS-SR	34.11	4.19
WEST BENGAL	33.66	4.13
CHHATTISGARH	18.92	2.32
JINDAL STAGE-II	15.39	1.89
SEMBCORP	15.31	1.88
NTPC STATIONS-WR	15.05	1.85
KERALA	14.99	1.84
MP	14.85	1.82
DELHI	14.53	1.78
J & K	14.25	1.75
RPREL	13.98	1.72
NTPC STATIONS-ER	13.74	1.69
MAHARASHTRA	11.32	1.39
SKS POWER	9.73	1.19
EMCO	7.50	0.92
JINDAL POWER	7.40	0.91
JHABUA POWER_MP	7.33	0.90
HIMACHAL PRADESH	7.32	0.90
ASSAM	6.89	0.85
MANIPUR	6.56	0.81
MB POWER	6.07	0.75
TRIPURA	5.92	0.73
SIKKIM	5.82	0.71
DB POWER	5.81	0.71
MEGHALAYA	5.51	0.68
TEESTA STG3	4.51	0.55
NTPC STATIONS-NR	3.71	0.46
BIHAR	3.51	0.43
RAJASTHAN	3.10	0.38
REGL	3.00	0.37
ONGC PALATANA	2.84	0.35
GMR KAMALANGA	2.51	0.31
THERMAL POWERTECH	2.27	0.28
AD HYDRO	1.89	0.23
BRBCL,NABINAGAR	1.89	0.23
IL&FS	1.78	0.22
BALCO	1.74	0.21
NTPC STATIONS-NER	1.63	0.20
NTPL	1.50	0.18
JHARKHAND	1.31	0.16
DIKCHU HEP	1.27	0.16
DVC	0.97	0.12

ANDHRA PRADESH	0.96	0.12
TASHIDENG HEP	0.77	0.09
ARUNACHAL PRADESH	0.55	0.07
JORETHANG	0.55	0.07
CHUZACHEN HEP	0.53	0.07
SPECTRUM	0.49	0.06
HARYANA	0.39	0.05
NSPCL	0.36	0.04
SASAN UMPP	0.31	0.04
ESSAR POWER	0.26	0.03
TAMIL NADU	0.22	0.03
DHARIWAL POWER	0.18	0.02
RGPPL_Others	0.07	0.01
RGPPL_IR	0.05	0.01
KARCHAM WANGTOO	0.04	0.005
ACBIL	0.03	0.004
MARUTI COAL	0.02	0.002
Total	814.48	100.00
Volume sold by top 5 Regional Entities	367.84	45.16

Table-16: VOLUME OF ELECTRICITY PURCHASED IN REAL TIME MARKET THROUGH POWER EXCHANGES, OCTOBER 2020		
Name of the Entity	Volume of Purchase (MUs)	% of Volume
ANDHRA PRADESH	132.30	16.24
J & K	117.07	14.37
WEST BENGAL	82.75	10.16
PUNJAB	74.20	9.11
RAJASTHAN	74.10	9.10
MAHARASHTRA	55.09	6.76
TELANGANA	47.72	5.86
DELHI	30.50	3.74
ODISHA	24.46	3.00
BIHAR	24.18	2.97
UTTAR PRADESH	24.11	2.96
ASSAM	19.75	2.42
TAMIL NADU	18.98	2.33
GUJARAT	15.15	1.86
HARYANA	11.14	1.37
HIMACHAL PRADESH	9.35	1.15
KARNATAKA	8.74	1.07
TRIPURA	6.76	0.83
JHARKHAND	5.30	0.65
KERALA	5.26	0.65
MEGHALAYA	3.59	0.44
GOA	3.59	0.44
MP	3.47	0.43
CHHATTISGARH	3.46	0.42
DADRA & NAGAR HAVELI	3.24	0.40
JINDAL POWER	3.20	0.39
UTTARAKHAND	2.02	0.25
MANIPUR	1.27	0.16
COASTGEN	1.27	0.16
DAMAN AND DIU	1.00	0.12
JAYPEE NIGRIE	0.35	0.04
SKS POWER	0.32	0.04
AMPS Hazira	0.30	0.04
NAGALAND	0.20	0.02
JORETHANG	0.18	0.02
JINDAL STAGE-II	0.08	0.01
REGL	0.05	0.01
TOTAL	814.48	100.00
Volume purchased by top 5 Regional Entities	480.41	58.98

Table-17: VOLUME OF ELECTRICITY UNDER DRAWAL (EXPORTED) THROUGH DSM, OCTOBER 2020		
Name of the Entity	Volume of Under drawal (MUs)	% of Volume
NHPC STATIONS	93.38	4.84
TAMIL NADU	88.16	4.57
NTPC STATIONS-WR	84.20	4.36
MAHARASHTRA	83.91	4.35
TELANGANA	76.55	3.97
MP	76.08	3.94
KARNATAKA	71.86	3.73
UTTAR PRADESH	71.60	3.71
DELHI	71.34	3.70
CHUKHA HEP	67.10	3.48
GUJARAT	63.52	3.29
SASAN UMPP	61.55	3.19
ANDHRA PRADESH	49.75	2.58
KURICHU HEP	45.29	2.35
RAJASTHAN	42.51	2.20
BIHAR	41.60	2.16
NTPC STATIONS-NR	41.49	2.15
ODISHA	41.28	2.14
PUNJAB	38.76	2.01
HARYANA	30.05	1.56
NTPC STATIONS-SR	26.82	1.39
CHHATTISGARH	25.93	1.34
DVC	25.47	1.32
NLC	23.15	1.20
NTPC STATIONS-ER	22.13	1.15
KERALA	20.82	1.08
JHARKHAND	19.15	0.99
AMPS Hazira	18.94	0.98
JINDAL STAGE-II	17.38	0.90
GIWEL_BHUJ	16.85	0.87
WEST BENGAL	16.27	0.84
J & K	16.13	0.84
BBMB	13.65	0.71
MB POWER	13.11	0.68
NAPP	12.03	0.62
ASSAM	10.84	0.56
UTTARAKHAND	10.54	0.55
ORANGE_TCN	9.54	0.49
NJPC	9.25	0.48
RENEW_BHACHAU	9.11	0.47
TEESTA HEP	9.09	0.47
NEEPCO STATIONS	9.07	0.47
OSTRO	8.78	0.45
PONDICHERRY	8.60	0.45
RPREL	8.52	0.44
MANGDECHU HEP	8.25	0.43
MEGHALAYA	8.01	0.42
GIWEL_TCN	7.82	0.41
JINDAL POWER	7.82	0.41
RAMPUR HEP	7.76	0.40
GOA	7.71	0.40
TRIPURA	7.52	0.39
TATA_PVGD	6.87	0.36
HIMACHAL PRADESH	6.62	0.34
MAITHON POWER LTD	5.54	0.29
ALFANAR_BHUJ	5.32	0.28
JAYPEE NIGRIE	5.22	0.27

MYTRAH_TCN	4.97	0.26
FORTUM2_PVGD	4.95	0.26
GMR KAMALANGA	4.82	0.25
EMCO	4.80	0.25
SBG_NPK	4.78	0.25
KARCHAM WANGTOO	4.59	0.24
DADRA & NAGAR HAVELI	4.27	0.22
TRN ENERGY	4.15	0.22
AVAADA1_PVGD	4.09	0.21
AGEMPL BHUJ	4.09	0.21
SBG_PVGD	3.83	0.20
JHABUA POWER_MP	3.77	0.20
AVAADA2_PVGD	3.76	0.19
ACBIL	3.75	0.19
LANKO_AMK	3.72	0.19
BETAM_TCN	3.71	0.19
MAHINDRA_RUMS	3.63	0.19
ADHUNIK POWER LTD	3.54	0.18
RAIL	3.49	0.18
INOX_BHUJ	3.48	0.18
ARUNACHAL PRADESH	3.47	0.18
MIZORAM	3.41	0.18
RAP C	3.38	0.18
ESSAR POWER	3.36	0.17
SIKKIM	3.28	0.17
PARAM_PVGD	3.09	0.16
RENEW_BHUJ	2.97	0.15
NAGALAND	2.95	0.15
ARINSUM_RUMS	2.93	0.15
NSPCL	2.91	0.15
SEMBCORP	2.85	0.15
RANGANADI HEP	2.84	0.15
NTPC STATIONS-NER	2.82	0.15
DHARIWAL POWER	2.75	0.14
BRBCL,NABINAGAR	2.62	0.14
KSK MAHANADI	2.61	0.14
REGL	2.57	0.13
ACME_RUMS	2.57	0.13
TEESTA STG3	2.48	0.13
NEPAL(NVVN)	2.41	0.13
NTPC_ANTP	2.39	0.12
MANIPUR	2.37	0.12
TEHRI	2.32	0.12
CHANDIGARH	2.30	0.12
SAINJ HEP	2.18	0.11
AZURE_PVGD	2.06	0.11
DIKCHU HEP	1.98	0.10
DB POWER	1.94	0.10
ACME_SLR	1.93	0.10
CLEAN_SLR	1.92	0.10
CGPL	1.85	0.10
TATA_SLR	1.84	0.10
RAP B	1.80	0.09
COASTGEN	1.78	0.09
FORTUM1_PVGD	1.74	0.09
RKM POWER	1.71	0.09
JITPL	1.71	0.09
TATA_ANTP	1.69	0.09
NTPL	1.57	0.08
THERMAL POWERTECH	1.54	0.08
SB_SLR	1.48	0.08

CHUZACHEN HEP	1.41	0.07
KOTESHWAR	1.37	0.07
NEP	1.36	0.07
ARERJL_SLR	1.35	0.07
AD HYDRO	1.30	0.07
RANGIT HEP	1.30	0.07
NPGC	1.30	0.07
RENEW_SLR_BKN	1.27	0.07
MTPS II	1.27	0.07
DAMAN AND DIU	1.26	0.07
ONGC PALATANA	1.24	0.06
AZURE_SLR	1.12	0.06
SKS POWER	1.08	0.06
AZURE_ANTP	1.07	0.06
ADY13_PVGD	1.06	0.05
TASHIDENG HEP	1.03	0.05
ADY6_PVGD	0.98	0.05
BANGLADESH	0.97	0.05
ARS_PVGD	0.97	0.05
KREDL_PVGD	0.97	0.05
YARROW_PVGD	0.96	0.05
ABSP_ANTP	0.95	0.05
ADY2_PVGD	0.89	0.05
FRV_NPK	0.89	0.05
AHSP_ANTP	0.89	0.05
ADY10_PVGD	0.87	0.05
IL&FS	0.82	0.04
ADY1_PVGD	0.82	0.04
AKS_PVGD	0.80	0.04
ADY3_PVGD	0.76	0.04
AZURE34_SLR	0.75	0.04
AKSP_ANTP	0.74	0.04
NETCL VALLUR	0.72	0.04
RENEW_PVGD	0.71	0.04
FRV_ANTP	0.66	0.03
BHADRAVATHI HVDC	0.63	0.03
JORETHANG	0.63	0.03
BALCO	0.61	0.03
DAGACHU	0.59	0.03
PARE HEP	0.58	0.03
LANCO BUDHIL	0.48	0.03
IGSTPS	0.45	0.02
KSMPL_SLR	0.40	0.02
LOKTAK	0.38	0.02
ADANI GREEN	0.35	0.02
DOYANG HEP	0.34	0.02
BARC	0.34	0.02
SHREE CEMENT	0.24	0.01
RENEW_SLR	0.20	0.01
HVDC RAIGARH	0.20	0.01
NFF	0.16	0.01
VINDHYACHAL HVDC	0.15	0.01
HVDC CHAMPA	0.10	0.01
HVDC ALPD	0.08	0.004
RGPPL	0.07	0.004
HVDC PUS	0.05	0.003
TALA HEP	0.03	0.002
DCPP	0.02	0.001
Total	1929.15	100.00
Volume Exported by top 5 Regional Entities	426.20	22.09

Table-18: VOLUME OF ELECTRICITY OVER DRAWAL (IMPORTED) THROUGH DSM, OCTOBER 2020

Name of the Entity	Volume of Over drawal (MUs)	% of Volume
TALA HEP	132.80	6.99
RAJASTHAN	97.93	5.15
NTPC STATIONS-ER	87.09	4.58
WEST BENGAL	71.54	3.76
UTTAR PRADESH	65.69	3.46
J & K	55.60	2.93
NTPC STATIONS-WR	55.46	2.92
HARYANA	52.07	2.74
NTPC STATIONS-NR	51.64	2.72
TAMIL NADU	50.08	2.64
MAHARASHTRA	49.59	2.61
PUNJAB	48.21	2.54
ANDHRA PRADESH	47.50	2.50
TELANGANA	44.09	2.32
GUJARAT	42.91	2.26
CGPL	41.07	2.16
BIHAR	39.48	2.08
NTPC STATIONS-SR	37.49	1.97
KARNATAKA	37.25	1.96
HIMACHAL PRADESH	32.87	1.73
MP	29.44	1.55
UTTARAKHAND	27.66	1.46
DVC	26.49	1.39
ASSAM	24.16	1.27
RGPL	23.23	1.22
AMPS Hazira	21.40	1.13
RPREL	21.00	1.11
NHPC STATIONS	20.75	1.09
CHHATTISGARH	20.37	1.07
NLC	18.59	0.98
BALCO	18.42	0.97
ODISHA	16.92	0.89
DAGACHU	15.82	0.83
NETCL VALLUR	15.19	0.80
KERALA	14.34	0.75
JHARKHAND	13.45	0.71
MANGDECHU HEP	12.13	0.64
GIWEL_TCN	10.92	0.57
NPGC	10.64	0.56
REGL	10.09	0.53
TEESTA STG3	9.67	0.51
EMCO	9.59	0.50
THERMAL POWERTECH	9.58	0.50
JHABUA POWER_MP	9.23	0.49
BRBCL,NABINAGAR	9.19	0.48
DAMAN AND DIU	8.59	0.45
MYTRAH_TCN	8.28	0.44
DB POWER	8.22	0.43
GIWEL_BHUI	8.06	0.42
MB POWER	7.63	0.40
TRIPURA	7.57	0.40
JAYPEE NIGRIE	7.32	0.39
COASTGEN	7.11	0.37
ORANGE_TCN	7.05	0.37
NEPAL(NVVN)	7.01	0.37
KAPP 3&4	6.68	0.35
RENEW_BHUI	6.53	0.34
GOA	6.46	0.34

MAITHON POWER LTD	6.28	0.33
CLEAN_SLR	6.14	0.32
RAIL	6.13	0.32
IGSTPS	5.88	0.31
DADRA & NAGAR HAVELI	5.59	0.29
TATA_PVGD	5.44	0.29
BETAM_TCN	5.26	0.28
NTPC_ANTP	5.12	0.27
OSTRO	5.03	0.26
JORETHANG	5.03	0.26
CHANDIGARH	4.94	0.26
FORTUM2_PVGD	4.93	0.26
BBMB	4.87	0.26
KARCHAM WANGTOO	4.74	0.25
BANGLADESH	4.73	0.25
ARUNACHAL PRADESH	4.39	0.23
SBG_NPK	4.15	0.22
ARINSUM_RUMS	4.08	0.21
AVAADA1_PVGD	4.08	0.21
TASHIDENG HEP	3.76	0.20
RENEW_BHACHAU	3.63	0.19
MAHINDRA_RUMS	3.60	0.19
AGEMPL BHUJ	3.57	0.19
SBG_PVGD	3.42	0.18
PONDICHERRY	3.41	0.18
SIKKIM	3.38	0.18
NTPC STATIONS-NER	3.31	0.17
AVAADA2_PVGD	3.06	0.16
MANIPUR	3.05	0.16
SEBPCORP	3.04	0.16
NJPC	3.01	0.16
MTPS II	2.99	0.16
AZURE_SLR	2.87	0.15
ALFANAR_BHUJ	2.87	0.15
JINDAL STAGE-II	2.86	0.15
ACME_RUMS	2.69	0.14
ADHUNIK POWER LTD	2.68	0.14
INOX_BHUJ	2.64	0.14
ACME_SLR	2.60	0.14
IL&FS	2.48	0.13
PARAM_PVGD	2.43	0.13
DIKCHU HEP	2.42	0.13
RENEW_SLR_BKN	2.36	0.12
RAP C	2.25	0.12
AZURE_PVGD	2.21	0.12
NAPP	2.19	0.12
JINDAL POWER	2.17	0.11
ARERJL_SLR	2.08	0.11
JITPL	2.02	0.11
MEGHALAYA	2.02	0.11
NTPL	1.91	0.10
FORTUM1_PVGD	1.91	0.10
TEHRI	1.83	0.10
TEESTA HEP	1.81	0.10
MIZORAM	1.81	0.10
AZURE34_SLR	1.79	0.09
ESSAR POWER	1.64	0.09
GMR KAMALANGA	1.53	0.08
TATA_ANTP	1.52	0.08
SKS POWER	1.49	0.08
ACBIL	1.43	0.08
KSK MAHANADI	1.38	0.07

NEEPCO STATIONS	1.37	0.07
SB_SLR	1.32	0.07
RENEW_PVGD	1.28	0.07
RAP B	1.26	0.07
ADY2_PVGD	1.25	0.07
ADY1_PVGD	1.24	0.07
NSPCL	1.24	0.07
AHSP_ANTP	1.19	0.06
NEP	1.18	0.06
AKS_PVGD	1.16	0.06
ARS_PVGD	1.16	0.06
ADY10_PVGD	1.15	0.06
FRV_ANTP	1.14	0.06
DGEN MEGA POWER	1.12	0.06
ADY13_PVGD	1.12	0.06
TATA_SLR	1.11	0.06
AKSP_ANTP	1.08	0.06
SASAN UMPP	1.06	0.06
ADY3_PVGD	1.03	0.05
ABSP_ANTP	1.03	0.05
DELHI	0.97	0.05
YARROW_PVGD	0.97	0.05
KREDL_PVGD	0.96	0.05
CHUZACHEN HEP	0.93	0.05
FRV_NPK	0.91	0.05
ADY6_PVGD	0.90	0.05
ONGC PALATANA	0.86	0.05
NAGALAND	0.84	0.04
RANGANADI HEP	0.82	0.04
RANGIT HEP	0.79	0.04
AD HYDRO	0.74	0.04
SAINJ HEP	0.72	0.04
RKM POWER	0.67	0.04
AZURE_ANTP	0.66	0.03
MEENAKSHI	0.64	0.03
RENEW_SLR	0.59	0.03
LANKO KONDAPALLI	0.56	0.03
KOTESHWAR	0.56	0.03
ADANI GREEN	0.51	0.03
SIMHAPURI	0.45	0.02
KSMPL_SLR	0.42	0.02
HVDC CHAMPA	0.39	0.02
DHARIWAL POWER	0.37	0.02
RAMPUR HEP	0.29	0.02
SHREE CEMENT	0.27	0.01
LANCO BUDHIL	0.22	0.01
LOKTAK	0.14	0.01
PARE HEP	0.12	0.01
LANKO_AMK	0.10	0.01
HVDC ALPD	0.07	0.004
BARC	0.05	0.003
HVDC PUS	0.05	0.002
HVDC RAIGARH	0.04	0.002
DOYANG HEP	0.03	0.002
TRN ENERGY	0.02	0.001
NFF	0.02	0.001
DCPP	0.01	0.001
BHADRAVATHI HVDC	0.01	0.0004
CHUKHA HEP	0.01	0.0003
TOTAL	1900.20	100.00
Volume Imported by top 5 Regional Entities	455.04	23.95

Table-19: TOTAL VOLUME OF NET SHORT-TERM TRANSACTIONS OF ELECTRICITY (REGIONAL ENTITY-WISE), OCTOBER 2020		
S. No.	Name of the Entity	Total volume of net short-term transactions of electricity*
1	TAMIL NADU	1200.57
2	PUNJAB	931.44
3	ANDHRA PRADESH	830.14
4	RAJASTHAN	597.03
5	HARYANA	539.49
6	WEST BENGAL	382.08
7	UTTARAKHAND	302.49
8	BIHAR	297.27
9	MAHARASHTRA	293.40
10	J & K	182.22
11	ASSAM	163.47
12	BANGLADESH	150.02
13	TALA HEP	132.77
14	UTTAR PRADESH	129.61
15	DADRA & NAGAR HAVELI	124.48
16	JHARKHAND	108.87
17	DELHI	103.38
18	MP	69.91
19	AMPS Hazira	50.16
20	GUJARAT	48.56
21	NTPC STATIONS-ER	46.08
22	DAMAN AND DIU	39.32
23	CGPL	39.21
24	NEPAL(NVVN)	23.50
25	RGPPL	23.16
26	NETCL VALLUR	14.48
27	NPGC	9.34
28	GOA	8.47
29	KAPP 3&4	6.68
30	NTPC STATIONS-NR	6.44
31	IGSTPS	5.43
32	BRBCL,NABINAGAR	4.28
33	CLEAN_SLR	4.22
34	MANGDECHU HEP	3.88
35	RENEW_BHUJ	3.56
36	MYTRAH_TCN	3.32
37	GIWEL_TCN	3.10
38	NTPC_ANTP	2.73
39	RAIL	2.64
40	AZURE_SLR	1.75
41	MTPS II	1.73
42	BETAM_TCN	1.55
43	ARINSUM_RUMS	1.15
44	DGEN MEGA POWER	1.12
45	RENEW_SLR_BKN	1.09
46	AZURE34_SLR	1.04
47	MAITHON POWER LTD	0.74
48	ARERJL_SLR	0.73
49	ACME_SLR	0.67
50	MEENAKSHI	0.64
51	RENEW_PVGD	0.57
52	LANKO KONDAPALLI	0.56
53	FRV_ANTP	0.48
54	SIMHAPURI	0.45
55	ADY1_PVGD	0.43
56	RENEW_SLR	0.38
57	ADY2_PVGD	0.36
58	AKS_PVGD	0.36
59	AKSP_ANTP	0.35
60	AHSP_ANTP	0.30

61	HVDC CHAMPA	0.30
62	ADY10_PVGD	0.28
63	ADY3_PVGD	0.27
64	ARS_PVGD	0.18
65	FORTUM1_PVGD	0.17
66	AZURE_PVGD	0.16
67	ACME_RUMS	0.13
68	ABSP_ANTP	0.07
69	ADY13_PVGD	0.06
70	FRV_NPK	0.03
71	KSMPL_SLR	0.02
72	SHREE CEMENT	0.02
73	YARROW_PVGD	0.001
74	KREDL_PVGD	-0.01
75	HVDC PUS	-0.01
76	DCPP	-0.01
77	HVDC ALPD	-0.01
78	AVAADA1_PVGD	-0.02
79	FORTUM2_PVGD	-0.02
80	MAHINDRA_RUMS	-0.03
81	RGPPL_IR	-0.05
82	RGPPL_Others	-0.07
83	ADY6_PVGD	-0.09
84	NFF	-0.14
85	VINDHYACHAL HVDC	-0.15
86	HVDC RAIGARH	-0.16
87	SB_SLR	-0.16
88	TATA_ANTP	-0.17
89	NEP	-0.18
90	LOKTAK	-0.24
91	BARC	-0.29
92	DOYANG HEP	-0.31
93	SBG_PVGD	-0.41
94	AZURE_ANTP	-0.41
95	PARE HEP	-0.46
96	TEHRI	-0.49
97	RANGIT HEP	-0.51
98	AGEMPL BHUJ	-0.53
99	RAP B	-0.54
100	BHADRAVATHI HVDC	-0.62
101	SBG_NPK	-0.63
102	PARAM_PVGD	-0.66
103	AVAADA2_PVGD	-0.70
104	TATA_SLR	-0.72
105	KOTESHWAR	-0.80
106	INOX_BHUJ	-0.84
107	RKM POWER	-1.03
108	RAP C	-1.12
109	KSK MAHANADI	-1.22
110	TATA_PVGD	-1.44
111	TRIPURA	-1.88
112	RANGANADI HEP	-2.02
113	NSPCL	-2.03
114	LANCO BUDHIL	-2.20
115	ALFANAR_BHUJ	-2.45
116	ORANGE_TCN	-2.49
117	DHARIWAL POWER	-3.07
118	OSTRO	-3.74
119	IL&FS	-3.75
120	NTPC STATIONS-NER	-4.18
121	NTPL	-4.72
122	PONDICHERRY	-5.20
123	RENEW_BHACHAU	-5.48
124	NAGALAND	-6.17

125	NJPC	-6.42
126	TEESTA HEP	-7.28
127	RAMPUR HEP	-7.56
128	MIZORAM	-8.11
129	BBMB	-8.78
130	GIWEL_BHUJ	-8.78
131	NAPP	-9.84
132	ADANI GREEN	-10.15
133	LANKO_AMK	-11.39
134	CHANDIGARH	-16.29
135	MANIPUR	-17.32
136	ACBIL	-17.43
137	JHABUA POWER_MP	-18.08
138	HIMACHAL PRADESH	-19.24
139	SPECTRUM	-20.57
140	AD HYDRO	-23.90
141	ARUNACHAL PRADESH	-25.08
142	TRN ENERGY	-26.80
143	SAINJ HEP	-27.45
144	TASHIDENG HEP	-28.67
145	KARCHAM WANGTOO	-30.42
146	KERALA	-30.52
147	BALCO	-31.66
148	NTPC STATIONS-SR	-39.38
149	DIKCHU HEP	-42.70
150	CHUZACHEN HEP	-44.93
151	KURICHU HEP	-45.29
152	MARUTI COAL	-48.29
153	JORETHANG	-50.14
154	SKS POWER	-52.64
155	SIKKIM	-57.76
156	DAGACHU	-58.08
157	SASAN UMPP	-60.81
158	NTPC STATIONS-WR	-61.30
159	ONGC PALATANA	-61.88
160	GMR KAMALANGA	-66.07
161	CHUKHA HEP	-67.09
162	TELANGANA	-69.11
163	MB POWER	-69.79
164	NHPC STATIONS	-72.63
165	JITPL	-78.10
166	MEGHALAYA	-82.28
167	CHHATTISGARH	-105.94
168	NEEPCO STATIONS	-121.27
169	THERMAL POWERTECH	-121.60
170	NLC	-130.88
171	ADHUNIK POWER LTD	-132.15
172	EMCO	-135.02
173	COASTGEN	-176.71
174	ESSAR POWER	-196.35
175	JINDAL STAGE-II	-218.15
176	DVC	-220.51
177	KARNATAKA	-246.10
178	DB POWER	-278.28
179	JINDAL POWER	-307.13
180	JAYPEE NIGRIE	-374.91
181	ODISHA	-389.25
182	REGL	-432.44
183	TEESTA STG3	-495.02
184	RPREL	-531.14
185	SEMBCORP	-715.24

* Total volume of net short-term transactions of electricity includes net of transactions of electricity through bilateral, power exchange and UI

(-) indicates sale and (+) indicates purchase

Table-20: DETAILS OF CONGESTION IN POWER EXCHANGES, OCTOBER 2020					
	Details of Congestion	Day Ahead Market		Real Time Market	
		IEX	PXIL	IEX	PXIL
A	Unconstrained Cleared Volume (MUs)	5502.70	49.57	814.52	0.00
B	Actual Cleared Volume and hence scheduled (MUs)	5500.53	49.57	814.48	0.00
C	Volume of electricity that could not be cleared and hence not scheduled because of congestion (MUs)	2.01	0.00	0.05	0.00
D	Volume of electricity that could not be cleared and hence not scheduled because of reasons other than congestion (MUs) *	0.16	0.00	0.00	0.00
E	Volume of electricity that could not be cleared as % to Unconstrained Cleared Volume	0.04%	0.00%	0.01%	0.00%
F	Percentage of the time congestion occurred during the month (Number of hours congestion occurred/Total number of hours in the month)	0.71%	0.00%	0.13%	0.00%
G	Congestion occurrence (%) time block wise				
	0.00 - 6.00 hours	0.00%	0.00%	0.00%	0.00%
	6.00 - 12.00 hours	0.00%	0.00%	0.00%	0.00%
	12.00 - 18.00 hours	0.00%	0.00%	25.00%	0.00%
	18.00 - 24.00 hours	100.00%	0.00%	75.00%	0.00%
<i>*There was Real Time Curtailment in DAM on IEX on 12th Oct , 2020</i>					
<i>Source: IEX, PXIL& NLDC</i>					

Table-21: VOLUME OF SHORT-TERM TRANSACTIONS OF ELECTRICITY IN INDIA (DAY-WISE) (MUs), OCTOBER 2020								
Date	Bilateral		Day Ahead Market [#]		Real Time Market [#]		Deviation Settlement (Over Drawl+Under Generation)	Total Electricity Generation (MU) as given at CEA Website*
	Through Traders and PXs**	Direct	IEX	PXIL	IEX	PXIL		
1-Oct-20	68.31	15.01	174.40	1.87	22.31	0.00	63.92	3557.49
2-Oct-20	62.87	14.19	129.29	1.43	22.39	0.00	63.63	3476.14
3-Oct-20	62.47	15.21	133.25	0.83	26.84	0.00	60.62	3534.91
4-Oct-20	60.66	18.94	126.02	0.58	30.22	0.00	62.35	3415.30
5-Oct-20	54.06	18.76	165.62	1.19	27.24	0.00	68.47	3550.68
6-Oct-20	57.71	19.37	195.68	1.82	26.45	0.00	62.17	3612.56
7-Oct-20	57.93	21.60	192.11	2.05	25.60	0.00	63.02	3696.86
8-Oct-20	58.19	25.10	194.08	1.76	28.84	0.00	60.98	3732.27
9-Oct-20	60.07	24.09	193.25	1.89	29.10	0.00	62.30	3736.46
10-Oct-20	63.44	23.14	200.11	1.89	23.46	0.00	63.35	3644.05
11-Oct-20	63.90	21.69	208.48	1.87	16.71	0.00	65.80	3458.18
12-Oct-20	71.82	24.53	192.76	1.24	24.06	0.00	66.56	3519.73
13-Oct-20	80.96	22.99	187.01	1.84	27.83	0.00	64.51	3558.31
14-Oct-20	72.60	23.69	198.72	1.06	44.54	0.00	69.18	3409.90
15-Oct-20	78.60	22.13	207.08	1.66	30.50	0.00	72.61	3433.32
16-Oct-20	79.88	28.82	197.47	2.48	37.53	0.00	64.77	3481.66
17-Oct-20	77.13	30.96	206.66	1.96	28.44	0.00	63.35	3549.62
18-Oct-20	74.85	30.10	182.59	1.19	22.53	0.00	64.69	3430.34
19-Oct-20	83.61	31.21	194.95	1.16	30.38	0.00	57.93	3506.50
20-Oct-20	75.99	30.99	192.27	1.01	28.91	0.00	60.12	3516.03
21-Oct-20	74.04	31.40	179.52	1.25	17.81	0.00	55.08	3449.31
22-Oct-20	77.57	30.47	174.96	1.42	18.12	0.00	55.84	3391.62
23-Oct-20	78.77	30.21	170.34	1.77	22.95	0.00	58.44	3347.43
24-Oct-20	79.84	30.71	148.38	1.07	25.33	0.00	59.01	3288.34
25-Oct-20	78.75	29.87	123.04	0.68	23.05	0.00	59.52	3147.84
26-Oct-20	62.90	30.14	161.98	1.62	20.83	0.00	58.80	3245.65
27-Oct-20	62.20	29.34	168.63	1.95	26.43	0.00	61.01	3361.38
28-Oct-20	74.64	28.77	173.68	2.15	26.76	0.00	56.46	3367.31
29-Oct-20	74.47	28.63	176.14	2.69	24.42	0.00	57.41	3412.24
30-Oct-20	76.02	29.02	178.39	1.89	25.01	0.00	58.75	3433.83
31-Oct-20	76.38	29.20	173.67	2.29	29.89	0.00	54.04	3439.24
Total	2180.64	790.30	5500.53	49.57	814.48	0.00	1914.68	107704.50

Source: NLDC

* Gross Electricity Generation excluding electricity generation from renewables and captive power plants.

** The volume of bilateral through PXs represents the volume through term-ahead contracts.

Scheduled volume of all the bid areas.

Table-22: PRICE OF SHORT-TERM TRANSACTIONS OF ELECTRICITY (DAY-WISE) (₹/kWh), OCTOBER 2020									
Market Segment	Day ahead market of IEX			Day ahead market of PXIL			Under Drawl/Over Drawl from the Grid (DSM)		
Date	Minimum ACP	Maximum ACP	Weighted Average Price*	Minimum ACP	Maximum ACP	Weighted Average Price*	All India Grid		
							Minimum Price	Maximum Price	Average Price**
1-Oct-20	2.27	3.95	2.75	2.55	4.25	2.99	0.00	4.02	1.79
2-Oct-20	2.08	3.00	2.43	2.00	4.25	2.96	0.00	8.00	2.44
3-Oct-20	2.10	3.37	2.53	2.45	3.10	2.51	0.00	5.25	2.48
4-Oct-20	2.00	3.00	2.44	2.00	3.23	2.63	0.00	4.17	1.97
5-Oct-20	2.10	4.93	2.88	2.00	3.33	2.66	0.55	8.00	3.10
6-Oct-20	2.32	5.08	3.03	2.50	3.59	2.67	0.00	7.37	2.62
7-Oct-20	2.27	5.01	2.98	2.40	3.59	2.65	0.00	6.72	2.89
8-Oct-20	2.18	5.28	2.95	2.54	4.00	2.90	0.00	8.00	2.86
9-Oct-20	2.25	4.15	2.83	2.50	4.45	2.73	0.00	6.69	2.93
10-Oct-20	2.00	4.00	2.79	2.50	3.83	2.90	0.00	7.34	2.45
11-Oct-20	2.46	3.37	2.76	2.50	3.27	2.72	0.00	4.39	1.87
12-Oct-20	2.00	3.99	2.72	2.50	3.30	2.76	0.00	5.67	2.22
13-Oct-20	2.25	3.50	2.65	2.50	3.80	2.68	0.00	5.98	2.12
14-Oct-20	2.25	3.84	2.69	2.50	2.85	2.66	0.00	5.33	2.31
15-Oct-20	2.29	5.00	2.89	2.40	3.59	2.73	0.00	8.00	2.81
16-Oct-20	2.25	5.33	2.91	2.50	4.25	2.89	0.00	8.00	3.59
17-Oct-20	2.43	5.76	3.19	2.35	4.49	2.80	0.62	8.00	3.54
18-Oct-20	2.25	3.87	2.70	2.59	5.47	3.44	0.00	8.00	2.81
19-Oct-20	2.49	5.35	3.20	2.50	3.83	2.94	0.00	7.70	3.29
20-Oct-20	2.35	5.90	3.17	2.79	4.46	3.29	0.00	8.00	3.11
21-Oct-20	2.06	4.75	2.93	2.40	4.75	3.18	0.00	5.75	2.39
22-Oct-20	2.34	6.00	2.93	2.68	4.25	3.01	0.00	5.10	2.35
23-Oct-20	1.60	5.42	2.78	2.50	4.51	2.97	0.00	8.00	2.50
24-Oct-20	2.00	4.75	2.66	2.40	3.83	2.73	0.00	7.66	2.68
25-Oct-20	1.65	3.38	2.48	2.40	3.99	2.86	0.00	5.55	2.50
26-Oct-20	2.00	5.10	2.79	2.40	3.99	2.76	0.00	4.00	1.92
27-Oct-20	2.06	5.00	2.74	2.46	4.25	2.82	0.00	8.00	2.57
28-Oct-20	2.20	5.80	2.86	2.40	3.59	2.79	0.00	7.68	2.82
29-Oct-20	2.15	5.35	2.81	2.63	3.99	2.86	0.00	8.00	3.23
30-Oct-20	2.11	4.25	2.75	2.40	4.30	2.94	0.53	8.00	3.43
31-Oct-20	2.00	5.16	2.81	2.50	4.10	2.78	0.00	7.00	2.64
	1.60#	6.00#	2.83	2.00#	5.47#	2.84	0.00#	8.00#	2.65

Source: Data on price of PX transactions from IEX and PXIL and data on DSM Price from NLDC.

* Weighted average price computed based on Area Clearing Volume (ACV) and Area Clearing Price (ACP) for each hour of the day. Here, ACV and ACP represent the scheduled volume and weighted average price of all the bid areas of power exchanges.

** Simple average price of DSM of 96 time blocks of 15 minutes each in a day. DSM price includes Ceiling DSM Rate +40% additional DSM charge.

Maximum/Minimum in the month

Table-23: PRICE OF REAL TIME MARKET TRANSACTIONS OF ELECTRICITY (DAY-WISE) (₹/kWh), OCTOBER 2020						
Market Segment	Real Time market of IEX			Real Time market of PXIL		
Date	Minimum ACP	Maximum ACP	Weighted Average Price*	Minimum ACP	Maximum ACP	Weighted Average Price*
1-Oct-20	1.40	3.15	2.43	--	--	--
2-Oct-20	1.20	3.04	2.36	--	--	--
3-Oct-20	1.50	4.52	2.73	--	--	--
4-Oct-20	1.50	3.21	2.52	--	--	--
5-Oct-20	1.50	5.20	2.95	--	--	--
6-Oct-20	2.49	5.50	3.26	--	--	--
7-Oct-20	2.44	5.00	3.04	--	--	--
8-Oct-20	2.52	5.51	3.30	--	--	--
9-Oct-20	2.60	4.71	3.11	--	--	--
10-Oct-20	1.50	5.00	3.05	--	--	--
11-Oct-20	1.80	2.84	2.55	--	--	--
12-Oct-20	1.50	4.50	2.76	--	--	--
13-Oct-20	1.40	4.50	2.67	--	--	--
14-Oct-20	0.60	4.50	1.91	--	--	--
15-Oct-20	1.40	11.56	2.75	--	--	--
16-Oct-20	2.56	6.01	3.09	--	--	--
17-Oct-20	2.60	6.70	3.46	--	--	--
18-Oct-20	1.20	3.41	2.59	--	--	--
19-Oct-20	2.02	6.00	3.37	--	--	--
20-Oct-20	2.05	4.25	3.15	--	--	--
21-Oct-20	1.50	3.58	2.53	--	--	--
22-Oct-20	1.00	2.84	2.25	--	--	--
23-Oct-20	1.50	2.99	2.37	--	--	--
24-Oct-20	1.50	3.07	2.41	--	--	--
25-Oct-20	0.90	2.92	2.26	--	--	--
26-Oct-20	1.30	2.83	2.39	--	--	--
27-Oct-20	1.30	6.00	2.63	--	--	--
28-Oct-20	2.41	6.00	3.04	--	--	--
29-Oct-20	2.02	3.57	2.74	--	--	--
30-Oct-20	2.00	3.60	2.86	--	--	--
31-Oct-20	2.00	5.50	3.12	--	--	--
	0.60#	11.56#	2.78	--	--	--

Source: IEX and PXIL

* Weighted average price computed based on Area Clearing Volume (ACV) and Area Clearing Price (ACP) for each hour of the day. Here, ACV and ACP represent the scheduled volume and weighted average price of all the bid areas of power exchanges.

Maximum/Minimum in the month

Table-24: VOLUME OF SHORT-TERM TRANSACTIONS OF ELECTRICITY (REGIONAL ENTITY*-WISE) (MUs), OCTOBER 2020

Name of the Entity	Through Bilateral			Through Power Exchange (DAM + RTM)			Through DSM with Regional Grid			Total Net***
	Sale	Purchase	Net**	Sale	Purchase	Net**	Import (Over Draw)	Export (Under Draw)	Net**	
PUNJAB	65.76	288.68	222.92	0.00	699.07	699.07	48.21	38.76	9.44	931.44
HARYANA	0.00	292.67	292.67	7.18	231.98	224.80	52.07	30.05	22.02	539.49
RAJASTHAN	10.52	119.51	108.98	11.07	443.69	432.62	97.93	42.51	55.42	597.03
DELHI	131.16	111.70	-19.46	46.94	240.15	193.21	0.97	71.34	-70.37	103.38
U P	17.25	57.76	40.51	244.19	339.19	95.01	65.69	71.60	-5.91	129.61
UTTARAKHAND	0.00	0.00	0.00	0.00	285.37	285.37	27.66	10.54	17.12	302.49
HIMACHAL P	46.06	69.57	23.51	177.00	108.00	-69.01	32.87	6.62	26.25	-19.24
J & K	57.12	0.00	-57.12	15.85	215.73	199.88	55.60	16.13	39.47	182.22
CHANDIGARH	0.00	0.00	0.00	21.53	2.60	-18.94	4.94	2.30	2.65	-16.29
MP	0.03	294.26	294.23	211.82	34.14	-177.68	29.44	76.08	-46.64	69.91
MAHARASHTRA	5.81	38.13	32.32	27.65	323.05	295.40	49.59	83.91	-34.33	293.40
GUJARAT	369.32	5.75	-363.56	487.78	920.51	432.74	42.91	63.52	-20.61	48.56
CHHATTISGARH	75.81	96.09	20.28	129.10	8.44	-120.66	20.37	25.93	-5.56	-105.94
GOA	0.00	13.92	13.92	18.85	14.65	-4.20	6.46	7.71	-1.25	8.47
DAMAN & DIU	0.00	3.20	3.20	0.00	28.78	28.78	8.59	1.26	7.33	39.32
DADRA & NAGAR H	0.00	3.34	3.34	0.00	119.82	119.82	5.59	4.27	1.32	124.48
ANDHRA P	17.22	15.62	-1.60	13.34	847.34	834.00	47.50	49.75	-2.26	830.14
KARNATAKA	152.55	1.58	-150.97	149.76	89.24	-60.52	37.25	71.86	-34.61	-246.10
KERALA	0.05	0.00	-0.05	68.40	44.41	-23.99	14.34	20.82	-6.48	-30.52
TAMIL NADU	0.00	826.29	826.29	1.47	413.82	412.36	50.08	88.16	-38.07	1200.57
PONDICHERRY	0.00	0.00	0.00	0.00	0.00	0.00	3.41	8.60	-5.20	-5.20
TELANGANA	192.66	21.14	-171.52	83.77	218.64	134.87	44.09	76.55	-32.46	-69.11
WEST BENGAL	0.73	193.29	192.57	72.91	207.16	134.25	71.54	16.27	55.27	382.08
ODISHA	17.25	56.00	38.75	469.39	65.74	-403.65	16.92	41.28	-24.35	-389.25
BIHAR	0.17	92.20	92.04	35.99	243.34	207.35	39.48	41.60	-2.12	297.27
JHARKHAND	0.00	129.02	129.02	26.71	12.28	-14.44	13.45	19.15	-5.70	108.87
SIKKIM	5.55	0.00	-5.55	52.30	0.00	-52.30	3.38	3.28	0.10	-57.76
DVC	217.04	8.85	-208.18	13.34	0.00	-13.34	26.49	25.47	1.02	-220.51
ARUNACHAL P	0.00	0.00	0.00	26.00	0.00	-26.00	4.39	3.47	0.92	-25.08
ASSAM	0.00	61.23	61.23	53.45	142.37	88.92	24.16	10.84	13.32	163.47
MANIPUR	0.00	0.00	0.00	19.28	1.27	-18.00	3.05	2.37	0.68	-17.32
MEGHALAYA	36.92	0.00	-36.92	48.78	9.40	-39.37	2.02	8.01	-5.99	-82.28
MIZORAM	0.00	0.00	0.00	6.50	0.00	-6.50	1.81	3.41	-1.60	-8.11
NAGALAND	0.00	0.00	0.00	4.29	0.23	-4.06	0.84	2.95	-2.11	-6.17
TRIPURA	0.00	0.00	0.00	8.88	6.95	-1.93	7.57	7.52	0.05	-1.88
NTPC STNS-NR	0.00	0.00	0.00	3.71	0.00	-3.71	51.64	41.49	10.15	6.44
NHPC STNS	0.00	0.00	0.00	0.00	0.00	0.00	20.75	93.38	-72.63	-72.63
NFF	0.00	0.00	0.00	0.00	0.00	0.00	0.02	0.16	-0.14	-0.14
RAIL	0.00	0.00	0.00	0.00	0.00	0.00	6.13	3.49	2.64	2.64
NEP	0.00	0.00	0.00	0.00	0.00	0.00	1.18	1.36	-0.18	-0.18
NAPP	0.00	0.00	0.00	0.00	0.00	0.00	2.19	12.03	-9.84	-9.84
RAP B	0.00	0.00	0.00	0.00	0.00	0.00	1.26	1.80	-0.54	-0.54
NJPC	0.00	0.00	0.00	0.18	0.00	-0.18	3.01	9.25	-6.24	-6.42
TEHRI	0.00	0.00	0.00	0.00	0.00	0.00	1.83	2.32	-0.49	-0.49
BBMB	0.00	0.00	0.00	0.00	0.00	0.00	4.87	13.65	-8.78	-8.78
RAP C	0.00	0.00	0.00	0.00	0.00	0.00	2.25	3.38	-1.12	-1.12
AD HYDRO	7.58	0.00	-7.58	15.76	0.00	-15.76	0.74	1.30	-0.57	-23.90
IGSTPS	0.00	0.00	0.00	0.00	0.00	0.00	5.88	0.45	5.43	5.43
KOTESHWAR	0.00	0.00	0.00	0.00	0.00	0.00	0.56	1.37	-0.80	-0.80
KARCHAM WANGT	0.00	0.00	0.00	30.57	0.00	-30.57	4.74	4.59	0.15	-30.42
SHREE CEMENT	0.00	0.00	0.00	0.00	0.00	0.00	0.27	0.24	0.02	0.02
LANCO BUDHIL	0.00	0.00	0.00	1.94	0.00	-1.94	0.22	0.48	-0.27	-2.20
RAMPUR HEP	0.00	0.00	0.00	0.09	0.00	-0.09	0.29	7.76	-7.46	-7.56
SAINJ HEP	0.00	0.00	0.00	25.99	0.00	-25.99	0.72	2.18	-1.46	-27.45
RENEW_SLR	0.00	0.00	0.00	0.00	0.00	0.00	0.59	0.20	0.38	0.38
AZURE_SLR	0.00	0.00	0.00	0.00	0.00	0.00	2.87	1.12	1.75	1.75
SB_SLR	0.00	0.00	0.00	0.00	0.00	0.00	1.32	1.48	-0.16	-0.16
ACME_SLR	0.00	0.00	0.00	0.00	0.00	0.00	2.60	1.93	0.67	0.67
AZURE34_SLR	0.00	0.00	0.00	0.00	0.00	0.00	1.79	0.75	1.04	1.04

TATA_SLR	0.00	0.00	0.00	0.00	0.00	0.00	1.11	1.84	-0.72	-0.72
RENEW_SLR_BKN	0.00	0.00	0.00	0.00	0.00	0.00	2.36	1.27	1.09	1.09
CLEAN_SLR	0.00	0.00	0.00	0.00	0.00	0.00	6.14	1.92	4.22	4.22
ARERJL_SLR	0.00	0.00	0.00	0.00	0.00	0.00	2.08	1.35	0.73	0.73
KSMPL_SLR	0.00	0.00	0.00	0.00	0.00	0.00	0.42	0.40	0.02	0.02
ADANI GREEN	0.00	0.00	0.00	10.31	0.00	-10.31	0.51	0.35	0.16	-10.15
NTPC STNS-WR	0.00	0.00	0.00	32.56	0.00	-32.56	55.46	84.20	-28.74	-61.30
BHADRAVATHI HV	0.00	0.00	0.00	0.00	0.00	0.00	0.01	0.63	-0.62	-0.62
VINDHYACHAL HV	0.00	0.00	0.00	0.00	0.00	0.00	0.00	0.15	-0.15	-0.15
JINDAL POWER	0.00	0.00	0.00	304.67	3.20	-301.48	2.17	7.82	-5.65	-307.13
LANKO_AMK	7.77	0.00	-7.77	0.00	0.00	0.00	0.10	3.72	-3.62	-11.39
NSPCL	0.00	0.00	0.00	0.36	0.00	-0.36	1.24	2.91	-1.67	-2.03
ACBIL	0.76	0.00	-0.76	14.36	0.00	-14.36	1.43	3.75	-2.32	-17.43
BALCO	42.50	0.00	-42.50	6.97	0.00	-6.97	18.42	0.61	17.81	-31.66
RGPPL	0.00	0.00	0.00	0.00	0.00	0.00	23.23	0.07	23.16	23.16
CGPL	0.00	0.00	0.00	0.00	0.00	0.00	41.07	1.85	39.21	39.21
DCPP	0.00	0.00	0.00	0.00	0.00	0.00	0.01	0.02	-0.01	-0.01
EMCO	0.00	0.00	0.00	139.81	0.00	-139.81	9.59	4.80	4.79	-135.02
KSK MAHANADI	0.00	0.00	0.00	0.00	0.00	0.00	1.38	2.61	-1.22	-1.22
ESSAR POWER	87.55	0.00	-87.55	107.09	0.00	-107.09	1.64	3.36	-1.71	-196.35
JINDAL STAGE-II	0.00	0.00	0.00	203.70	0.08	-203.62	2.86	17.38	-14.52	-218.15
DB POWER	126.72	0.00	-126.72	157.84	0.00	-157.84	8.22	1.94	6.28	-278.28
DHARIWAL POWER	0.00	0.00	0.00	0.68	0.00	-0.68	0.37	2.75	-2.38	-3.07
JAYPEE NIGRIE	29.58	0.00	-29.58	347.78	0.35	-347.43	7.32	5.22	2.10	-374.91
DGEN MEGA POWER	0.00	0.00	0.00	0.00	0.00	0.00	1.12	0.00	1.12	1.12
MB POWER	2.13	0.00	-2.13	62.18	0.00	-62.18	7.63	13.11	-5.48	-69.79
MARUTI COAL	0.00	0.00	0.00	48.29	0.00	-48.29	0.00	0.00	0.00	-48.29
SPECTRUM	0.00	0.00	0.00	20.57	0.00	-20.57	0.00	0.00	0.00	-20.57
JHABUA POWER_MI	0.00	0.00	0.00	23.54	0.00	-23.54	9.23	3.77	5.46	-18.08
SASAN UMP	0.00	0.00	0.00	0.31	0.00	-0.31	1.06	61.55	-60.50	-60.81
TRN ENERGY	22.67	0.00	-22.67	0.00	0.00	0.00	0.02	4.15	-4.13	-26.80
RKM POWER	0.00	0.00	0.00	0.00	0.00	0.00	0.67	1.71	-1.03	-1.03
SKS POWER	33.41	0.00	-33.41	19.96	0.32	-19.64	1.49	1.08	0.41	-52.64
BARC	0.00	0.00	0.00	0.00	0.00	0.00	0.05	0.34	-0.29	-0.29
KAPP 3&4	0.00	0.00	0.00	0.00	0.00	0.00	6.68	0.00	6.68	6.68
HVDC CHAMPA	0.00	0.00	0.00	0.00	0.00	0.00	0.39	0.10	0.30	0.30
MAHINDRA_RUMS	0.00	0.00	0.00	0.00	0.00	0.00	3.60	3.63	-0.03	-0.03
ARINSUM_RUMS	0.00	0.00	0.00	0.00	0.00	0.00	4.08	2.93	1.15	1.15
OSTRO	0.00	0.00	0.00	0.00	0.00	0.00	5.03	8.78	-3.74	-3.74
ACME_RUMS	0.00	0.00	0.00	0.00	0.00	0.00	2.69	2.57	0.13	0.13
RENEW_BHACHAU	0.00	0.00	0.00	0.00	0.00	0.00	3.63	9.11	-5.48	-5.48
GIWEL_BHUJ	0.00	0.00	0.00	0.00	0.00	0.00	8.06	16.85	-8.78	-8.78
INOX_BHUJ	0.00	0.00	0.00	0.00	0.00	0.00	2.64	3.48	-0.84	-0.84
AGEMPL BHUJ	0.00	0.00	0.00	0.00	0.00	0.00	3.57	4.09	-0.53	-0.53
REGL	133.83	0.00	-133.83	306.18	0.05	-306.13	10.09	2.57	7.51	-432.44
RPREL	371.10	0.00	-371.10	172.52	0.00	-172.52	21.00	8.52	12.48	-531.14
AMPS Hazira	0.00	5.95	5.95	0.00	41.75	41.75	21.40	18.94	2.46	50.16
HVDC RAIGARH	0.00	0.00	0.00	0.00	0.00	0.00	0.04	0.20	-0.16	-0.16
RGPPL_IR	0.00	0.00	0.00	0.05	0.00	-0.05	0.00	0.00	0.00	-0.05
RGPPL_Others	0.00	0.00	0.00	0.07	0.00	-0.07	0.00	0.00	0.00	-0.07
ALFANAR_BHUJ	0.00	0.00	0.00	0.00	0.00	0.00	2.87	5.32	-2.45	-2.45
RENEW_BHUJ	0.00	0.00	0.00	0.00	0.00	0.00	6.53	2.97	3.56	3.56
NTPC STNS-SR	0.00	0.00	0.00	50.05	0.00	-50.05	37.49	26.82	10.67	-39.38
LANKO KONDAPAL	0.00	0.00	0.00	0.00	0.00	0.00	0.56	0.00	0.56	0.56
SIMHAPURI	0.00	0.00	0.00	0.00	0.00	0.00	0.45	0.00	0.45	0.45
MEENAKSHI	0.00	0.00	0.00	0.00	0.00	0.00	0.64	0.00	0.64	0.64
COASTGEN	0.00	0.00	0.00	183.31	1.27	-182.04	7.11	1.78	5.33	-176.71
THERMAL POWERT	0.00	0.00	0.00	129.64	0.00	-129.64	9.58	1.54	8.04	-121.60
IL&FS	0.00	0.00	0.00	5.41	0.00	-5.41	2.48	0.82	1.66	-3.75
NLC	0.00	0.00	0.00	126.32	0.00	-126.32	18.59	23.15	-4.56	-130.88
SEMBCORP	312.22	0.00	-312.22	403.21	0.00	-403.21	3.04	2.85	0.19	-715.24
NETCL VALLUR	0.00	0.00	0.00	0.00	0.00	0.00	15.19	0.72	14.476	14.476
NTPL	0.00	0.00	0.00	5.06	0.00	-5.06	1.91	1.57	0.34	-4.72
AHSP_ANTP	0.00	0.00	0.00	0.00	0.00	0.00	1.19	0.89	0.30	0.30
AKSP_ANTP	0.00	0.00	0.00	0.00	0.00	0.00	1.08	0.74	0.35	0.35
ABSP_ANTP	0.00	0.00	0.00	0.00	0.00	0.00	1.03	0.95	0.07	0.07

AZURE_ANTP	0.00	0.00	0.00	0.00	0.00	0.00	0.66	1.07	-0.41	-0.41
TATA_ANTP	0.00	0.00	0.00	0.00	0.00	0.00	1.52	1.69	-0.17	-0.17
FRV_ANTP	0.00	0.00	0.00	0.00	0.00	0.00	1.14	0.66	0.48	0.48
NTPC_ANTP	0.00	0.00	0.00	0.00	0.00	0.00	5.12	2.39	2.73	2.73
GIWEL_TCN	0.00	0.00	0.00	0.00	0.00	0.00	10.92	7.82	3.10	3.10
MYTRAH_TCN	0.00	0.00	0.00	0.00	0.00	0.00	8.28	4.97	3.32	3.32
FRV_NPK	0.00	0.00	0.00	0.00	0.00	0.00	0.91	0.89	0.03	0.03
ORANGE_TCN	0.00	0.00	0.00	0.00	0.00	0.00	7.05	9.54	-2.49	-2.49
BETAM_TCN	0.00	0.00	0.00	0.00	0.00	0.00	5.26	3.71	1.55	1.55
SBG_PVGD	0.00	0.00	0.00	0.00	0.00	0.00	3.42	3.83	-0.41	-0.41
SBG_NPK	0.00	0.00	0.00	0.00	0.00	0.00	4.15	4.78	-0.63	-0.63
FORTUM1_PVGD	0.00	0.00	0.00	0.00	0.00	0.00	1.91	1.74	0.17	0.17
PARAM_PVGD	0.00	0.00	0.00	0.00	0.00	0.00	2.43	3.09	-0.66	-0.66
YARROW_PVGD	0.00	0.00	0.00	0.00	0.00	0.00	0.97	0.96	0.00	0.00
TATA_PVGD	0.00	0.00	0.00	0.00	0.00	0.00	5.44	6.87	-1.44	-1.44
RENEW_PVGD	0.00	0.00	0.00	0.00	0.00	0.00	1.28	0.71	0.57	0.57
AKS_PVGD	0.00	0.00	0.00	0.00	0.00	0.00	1.16	0.80	0.36	0.36
ARS_PVGD	0.00	0.00	0.00	0.00	0.00	0.00	1.16	0.97	0.18	0.18
AVAADA1_PVGD	0.00	0.00	0.00	0.00	0.00	0.00	4.08	4.09	-0.02	-0.02
ADY1_PVGD	0.00	0.00	0.00	0.00	0.00	0.00	1.24	0.82	0.43	0.43
ADY2_PVGD	0.00	0.00	0.00	0.00	0.00	0.00	1.25	0.89	0.36	0.36
ADY13_PVGD	0.00	0.00	0.00	0.00	0.00	0.00	1.12	1.06	0.06	0.06
ADY3_PVGD	0.00	0.00	0.00	0.00	0.00	0.00	1.03	0.76	0.27	0.27
ADY6_PVGD	0.00	0.00	0.00	0.00	0.00	0.00	0.90	0.98	-0.09	-0.09
ADY10_PVGD	0.00	0.00	0.00	0.00	0.00	0.00	1.15	0.87	0.28	0.28
AZURE_PVGD	0.00	0.00	0.00	0.00	0.00	0.00	2.21	2.06	0.16	0.16
FORTUM2_PVGD	0.00	0.00	0.00	0.00	0.00	0.00	4.93	4.95	-0.02	-0.02
AVAADA2_PVGD	0.00	0.00	0.00	0.00	0.00	0.00	3.06	3.76	-0.70	-0.70
KREDL_PVGD	0.00	0.00	0.00	0.00	0.00	0.00	0.96	0.97	-0.01	-0.01
NTPC STNS-ER	0.03	0.00	-0.03	18.85	0.00	-18.85	87.09	22.13	64.96	46.08
MAITHON POWER L	0.00	0.00	0.00	0.00	0.00	0.00	6.28	5.54	0.74	0.74
NPGC	0.00	0.00	0.00	0.00	0.00	0.00	10.64	1.30	9.34	9.34
ADHUNIK POWER L	129.02	0.00	-129.02	2.28	0.00	-2.28	2.68	3.54	-0.85	-132.15
CHUZACHEN HEP	5.93	0.00	-5.93	38.52	0.00	-38.52	0.93	1.41	-0.48	-44.93
RANGIT HEP	0.00	0.00	0.00	0.00	0.00	0.00	0.79	1.30	-0.51	-0.51
GMR KAMALANGA	0.00	0.00	0.00	62.78	0.00	-62.78	1.53	4.82	-3.29	-66.07
JITPL	56.48	0.00	-56.48	21.93	0.00	-21.93	2.02	1.71	0.31	-78.10
TEESTA HEP	0.00	0.00	0.00	0.00	0.00	0.00	1.81	9.09	-7.28	-7.28
DAGACHU	73.30	0.00	-73.30	0.00	0.00	0.00	15.82	0.59	15.23	-58.08
JORETHANG	33.74	0.00	-33.74	20.98	0.18	-20.80	5.03	0.63	4.40	-50.14
NEPAL(NVVN)	0.00	18.90	18.90	0.00	0.00	0.00	7.01	2.41	4.60	23.50
BANGLADESH	0.00	146.27	146.27	0.00	0.00	0.00	4.73	0.97	3.75	150.02
HVDC PUS	0.00	0.00	0.00	0.00	0.00	0.00	0.05	0.05	-0.01	-0.01
TEESTA STG3	0.00	0.00	0.00	502.21	0.00	-502.21	9.67	2.48	7.19	-495.02
DIKCHU HEP	0.00	0.00	0.00	43.15	0.00	-43.15	2.42	1.98	0.45	-42.70
HVDC ALPD	0.00	0.00	0.00	0.00	0.00	0.00	0.07	0.08	-0.01	-0.01
TASHIDENG HEP	17.05	0.00	-17.05	14.35	0.00	-14.35	3.76	1.03	2.73	-28.67
BRBCL,NABINAGA	0.00	0.00	0.00	2.29	0.00	-2.29	9.19	2.62	6.57	4.28
MTPS II	0.00	0.00	0.00	0.00	0.00	0.00	2.99	1.27	1.73	1.73
TALA HEP	0.00	0.00	0.00	0.00	0.00	0.00	132.80	0.03	132.77	132.77
CHUKHA HEP	0.00	0.00	0.00	0.00	0.00	0.00	0.01	67.10	-67.09	-67.09
KURICHU HEP	0.00	0.00	0.00	0.00	0.00	0.00	0.00	45.29	-45.29	-45.29
MANGDECHU HEP	0.00	0.00	0.00	0.00	0.00	0.00	12.13	8.25	3.88	3.88
NTPC STNS-NER	0.13	0.00	-0.13	4.54	0.00	-4.54	3.31	2.82	0.49	-4.18
NEEPCO STNS	0.00	0.00	0.00	113.57	0.00	-113.57	1.37	9.07	-7.70	-121.27
RANGANADI HEP	0.00	0.00	0.00	0.00	0.00	0.00	0.82	2.84	-2.02	-2.02
DOYANG HEP	0.00	0.00	0.00	0.00	0.00	0.00	0.03	0.34	-0.31	-0.31
ONGC PALATANA	56.93	0.00	-56.93	4.56	0.00	-4.56	0.86	1.24	-0.39	-61.88
LOKTAK	0.00	0.00	0.00	0.00	0.00	0.00	0.14	0.38	-0.24	-0.24
PARE HEP	0.00	0.00	0.00	0.00	0.00	0.00	0.12	0.58	-0.46	-0.46
<i>Source: NLDC</i>										
<i>* in case of a state, the entities which are "selling" also include generators connected to state grid and the entities which are "buying" also include open access consumers.</i>										
<i>** (-) indicates sale and (+) indicates purchase,</i>										
<i>*** Total net includes net of transactions through bilateral, power exchange and DSM</i>										